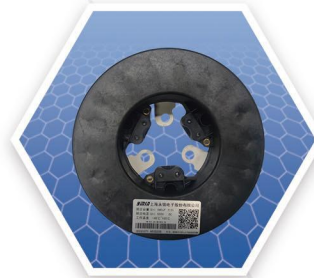
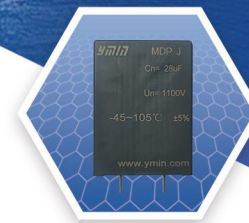


Capacitor Solutions, Ask YMIN for your Applications

Respond quickly and accurately
to customer needs



Shanghai YMIN Electronics Co., Ltd.



Metallized polypropylene film capacitors

Telephone: 021-33617848/+86 18355189974

Mail: ymin-sale@ymin.com

Web: www.ymin.com

Address: No. 258, Guangcun Road, Yangwang Economic
Park, Nanqiao Town, Fengxian District, Shanghai

Table of contents

Image retrieval, product system diagram.....	01
Product coding rules.....	02
DC-LINK capacitors for PCB.....	03~17
AC filter capacitor.....	18~19
New energy vehicle capacitors.....	20~23
Dual-motor hybrid vehicle bus capacitor.....	24
Passenger vehicle bus capacitor.....	25
Commercial Vehicle Bus Capacitor.....	26
Precautions for Use of Metallized Film Capacitors.....	27



Image retrieval

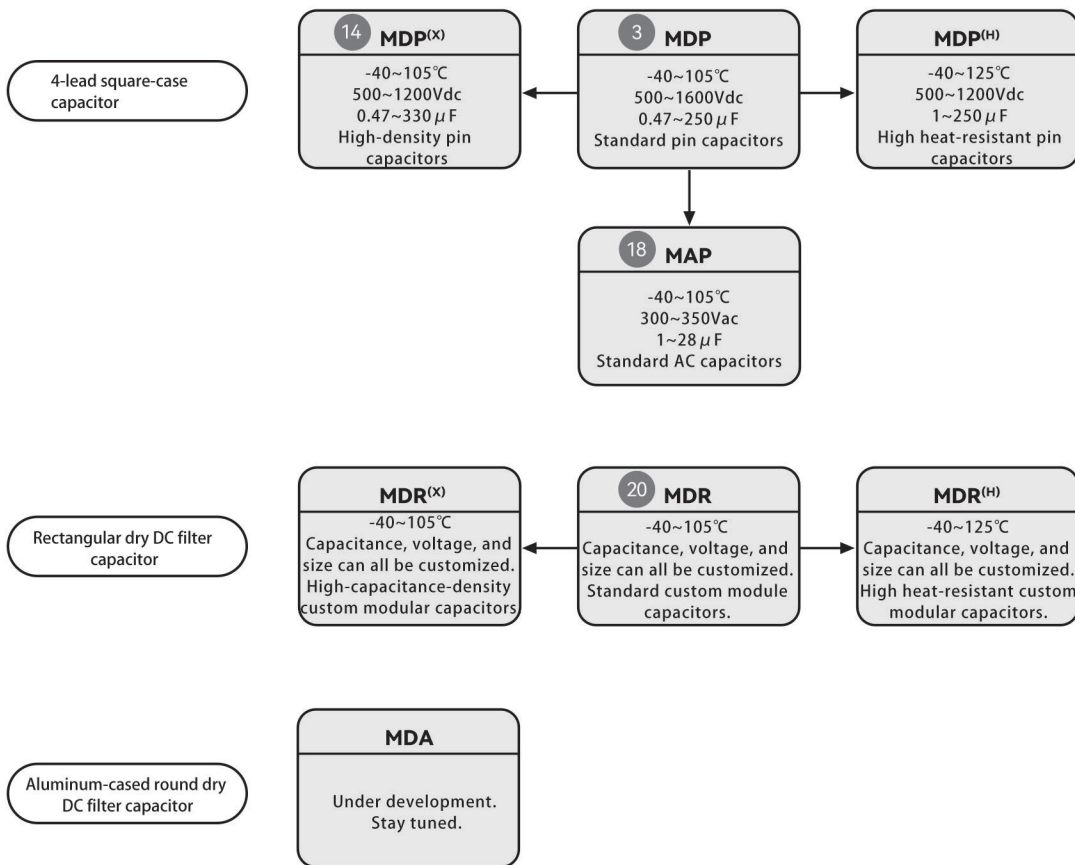
MDP
DC Support Square Shell Pin Series
Standard Products  **P3**

MAP
AC filter square shell pin series  **P18**

MDP(X)
DC Support Square Shell Pin Series
Miniature Products  **P14**

MDR
Custom module capacitors  **P20**

Product System Diagram





1	2	3	4	5	6	7	8	9	10	11	12	13	14	15	16	17	18	
↓			↓			↓			↓	↓						↓		
series		code	voltage (V)		code	capacity (μF)		code	tolerance	code	size (mm)						Internal Number	
MDP	MDP		500	501	5	505			±5%	J	PCB pinout (length W * height H * thickness T)						default	++
MDP ^(X)	MDP		800	801	50	506			±10%	K	Cylindrical (diameter D * height H)							
MAS	MAS		900	901	70	706					Customized (Length W * Height H)							
MDR	MDR		1200	122	140	147												
MDA	MDA																	
MAA	MAA																	

19	20	21	22	23			
↓	↓	↓	↓	↓			
PFootspacing (mm)	code	PFootspacing (mm)	code	PFootspacing (mm)	code	Version number	code
27.5	R	10.2	Y	3.5	A	Regular	A1...N
37.5	S	12.7	J	6.0	B	Miniaturization	X1...N
52.5	W	20.3	R	10.0	C	Automotive	C1...N
No/Customized	N	No/Customized	N	15.0	D	Military	J1...N
				No/Customized	N		

(1) Rated voltage: $500=50*10^1=500V$ code: 501, And so on.

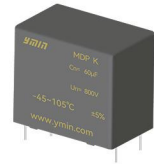
(2) nominal capacity: $147=14*10^7=140000000pF=140000nF=140\mu F$, And so on.

- ◇ MDP: DC square-shell capacitor
- ◇ MAP: AC square-shell capacitor
- ◇ MDR: Rectangular DC filter capacitor (automotive custom type)
- ◇ MAR: Rectangular AC filter capacitor (power system custom type)
- ◇ MDA: Round aluminum-shell DC filter capacitor
- ◇ MAA: Round aluminum-shell AC filter capacitor



MDP

- ◆ DC-LINK capacitors for PCBs
- ◆ Metallized polypropylene film structure
- ◆ Plastic shell encapsulation, epoxy resin filling (UL94 V-0)
- ◆ Excellent electrical performance
- ◆ Application Areas

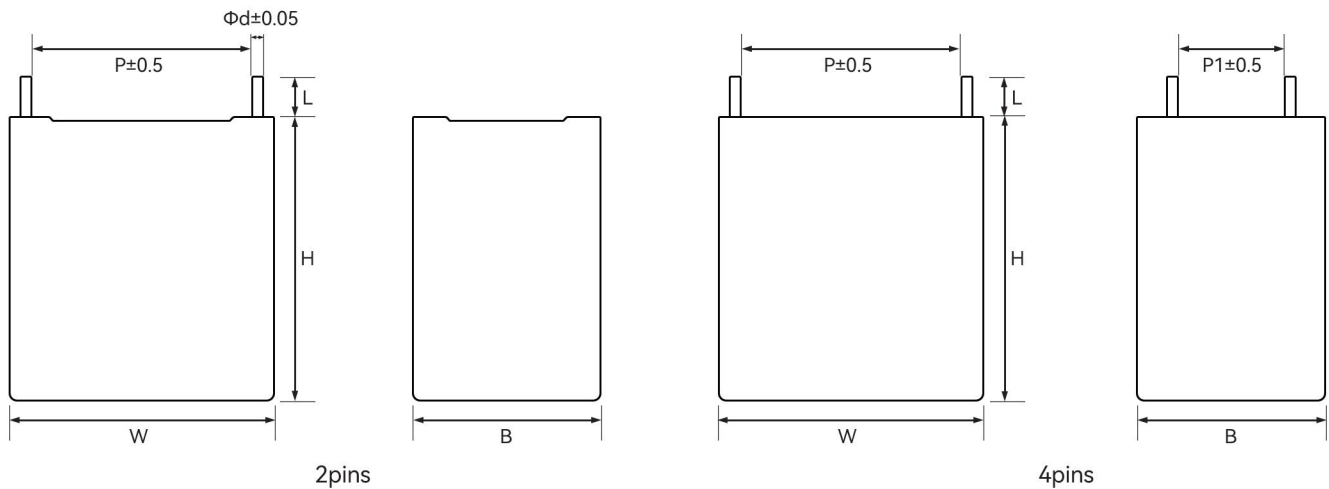


- ◇ Solar inverters ◇ Uninterruptible power supplies ◇ Military and high-end power supplies
- ◇ On-board chargers and charging stations

■ Main technical parameters

project	characteristic
Reference Standards	GB/T 17702 (IEC 61071)
Rated Voltage	500Vd.c.~1600Vd.c.
Capacity Range	5 μ F~190 μ F
Climate Category	40/85/56,40/105/56
Operating Temperature Range	-40°C~105°C
Capacity Tolerance	$\pm 5\%$ (J), $\pm 10\%$ (K)
Withstand Voltage	1.5U _N (10s,20°C $\pm 5^\circ$ C)
Insulation Resistance	$\geq 10000s$ (20°C,100Vd.c.,60s)
Self-Inductance (Ls)	<1nH/mm 引线间距
Dielectric Loss Tangent	0.0002
Maximum Peak Current (A)	$\square=C \times dv/dt$
Non-Repeatable Peak Current	1.4 \square (寿命期间1000次)
Overvoltage	1.1U _N (有载持续时间的30%/d)
	1.15 U _N (30min/d)
	1.2 U _N (5min/d)
	1.3 U _N (1min/d)
	1.5U _N (it is permissible to experience 1000 overvoltage events of 1.5UN each, lasting 30ms.)
Life expectancy	100000h@U _N ,70°C, $\Theta_{hs}=85^\circ$ C
Failure Rate	$\leq 300FIT@U_N,70^\circ C, \Theta_{hs}=85^\circ C$

■ Product Dimensions



Note: Product dimensions are in mm. Please refer to the "Product Dimension Table" for specific dimensions.



MDP

List of Standard Products

Rated voltage	C _N (μF)	W±1 (mm)	H±1 (mm)	T±1 (mm)	P (mm)	P1 (mm)	d±0.05 (mm)	dv/dt (V/μs)	tanδ(×10 ⁻⁴)		ESR@10kHz (mΩ)	I _{max} (A)	Product Code
									1kHz	10kHz			
500Vdc	5.0	32.0	20.0	11.0	27.5	-	0.8	67	9.5	98	21.9	5.1	MDP501505*322011++RN
	10	32.0	24.5	15.0	27.5	-	0.8	67	9.5	98	11.5	6.6	MDP501106*322415++RN
	22	32.0	37.0	22.0	27.5	10.2	0.8	67	9.5	98	5.8	10.1	MDP501226*323722++RY
	30	42.0	40.0	20.0	37.5	10.2	1.0	32	14	148	7.9	12.6	MDP501306*424020++SY
	35	42.0	37.0	28.0	37.5	10.2	1.0	32	14	148	8	13.6	MDP501356*423728++SY
	40	42.0	37.0	28.0	37.5	10.2	1.0	32	14	148	4.9	14.6	MDP501406*423728++SY
	40	42.0	44.0	24.0	37.5	10.2	1.0	32	16	148	4.9	14.6	MDP501406*424424++SY
	50	42.0	43.0	28.0	37.5	10.2	1.2	32	14	148	4	16.1	MDP501506*424328++SY
	50	42.0	45.0	30.0	37.5	20.3	1.2	32	14	148	5.1	16.1	MDP501506*424530++SR
	55	42.0	45.0	30.0	37.5	20.3	1.2	32	14	148	3.9	16.2	MDP501556*424530++SR
	60	42.0	45.0	30.0	37.5	20.3	1.2	12	14	150	4.3	20.1	MDP501606*424530++SR
	65	42.0	46.0	35.0	37.5	20.3	1.2	32	14	150	4.1	16.7	MDP501656*424635++SR
	70	42.0	50.0	35.0	37.5	20.3	1.2	32	15	155	3.9	17.5	MDP501706*425035++SR
	75	57.5	45.0	30.0	52.5	12.7	1.2	17	34	345	5.5	16.1	MDP501756*574530++WJ
	75	57.5	45.0	30.0	52.5	20.3	1.2	17	34	345	5.4	16.1	MDP501756*574530++WR
	80	57.5	45.0	30.0	52.5	20.3	1.2	17	34	345	5.4	16.2	MDP501806*574530++WR
	90	42.0	55.0	40.0	37.5	20.3	1.2	32	15	170	3.4	20	MDP501906*425540++SR
	100	57.5	50.0	35.0	52.5	20.3	1.2	17	34	345	4	18.1	MDP501107*575035++WR
	110	57.5	50.0	35.0	52.5	20.3	1.2	17	34	345	4	19.1	MDP501117*575035++WR
	120	42.0	62.0	45.0	37.5	20.3	1.2	32	14	145	3.7	22.5	MDP501127*426245++SR
120	57.5	56.0	35.0	52.5	20.3	1.2	17	34	345	3.8	19.5	MDP501127*575635++WR	
150	57.5	55.0	45.0	52.5	20.3	1.2	17	34	345	3.7	23	MDP501157*575545++WR	
150	57.5	64.5	35.0	52.5	20.3	1.2	17	34	345	3.7	22	MDP501157*576435++WR	
160	57.5	70.0	35.0	52.5	20.3	1.2	17	34	345	3.7	26	MDP501167*577035++WR	
190	57.5	64.5	45.0	52.5	20.3	1.2	17	34	345	3.7	30	MDP501197*576445++WR	
190	57.5	80.0	35.0	52.5	20.3	1.2	17	34	345	3.7	30	MDP501197*578035++WR	
260	57.5	78.0	50.0	52.5	20.3	1.2	17	34	345	2.9	35	MDP501267*577835++WR	
600Vdc	2.0	32.0	18.0	9.0	27.5	-	0.8	67	11	98	47.8	2.9	MDP601205*321809++RN
	3.0	32.0	20.0	11.0	27.5	-	0.8	67	11	98	31.8	4.2	MDP601305*322011++RN
	4.0	32.0	20.0	11.0	27.5	-	0.8	67	11	98	23.9	5.6	MDP601405*322011++RN
	5.0	32.0	22.0	13.0	27.5	-	0.8	67	11	98	19	7	MDP601505*322213++RN
	6.0	32.0	24.5	15.0	27.5	-	0.8	67	11	98	18.6	7.2	MDP601605*322415++RN
	7.0	32.0	24.5	15.0	27.5	-	0.8	67	11	98	15.8	8.3	MDP601705*322415++RN
	8.0	32.0	28.0	14.0	27.5	-	0.8	67	11	98	13.8	9.6	MDP601805*322814++RN
	9.0	32.0	30.0	16.0	27.5	-	0.8	67	11	98	12.4	10.8	MDP601905*323016++RN
	10	32.0	30.0	16.0	27.5	-	0.8	67	11	98	11	11	MDP601106*323016++RN
	12	32.0	33.0	18.0	27.5	-	0.8	67	11	98	10.8	12	MDP601126*323318++RN
	15	32.0	37.0	22.0	27.5	-	0.8	67	11	98	9	12.2	MDP601156*323722++RN
	15	32.0	37.0	22.0	27.5	10.2	0.8	67	11	98	7.4	16.7	MDP601156*323722++RY
	18	32.0	37.0	22.0	27.5	-	0.8	67	11	98	6.2	12.2	MDP601186*323722++RN
	18	32.0	37.0	22.0	27.5	10.2	0.8	67	10.5	98	7.9	12.2	MDP601186*323722++RY
20	42.0	40.0	20.0	37.5	10.2	1.0	32	19.5	170	9.8	12.3	MDP601206*424020++SY	
22	42.0	40.0	20.0	37.5	10.2	1.0	32	19.5	170	8.9	13.5	MDP601226*424020++SY	

Note: "*" indicates the product's capacity deviation, J=±5%, K=±10%, "++" indicates the internal number.



MDP

List of Standard Products

Rated voltage	C _N (μF)	W±1 (mm)	H±1 (mm)	T±1 (mm)	P (mm)	P1 (mm)	d±0.05 (mm)	dv/dt (V/μs)	tanδ(×10 ⁻⁴)		ESR@ 10kHz (mΩ)	I _{max} (A)	Product Code
									1kHz	10kHz			
600Vdc	25	42.0	40.0	20.0	37.5	10.2	1.0	32	19.5	170	7.7	15.5	MDP601256*424020++SY
	30	42.0	37.0	28.0	37.5	10.2	1.0	32	19.5	170	6.4	18.6	MDP601306*423728++SY
	30	42.0	44.0	24.0	37.5	12.7	1.0	32	19.5	170	6.4	18.6	MDP601306*424424++SJ
	35	42.0	45.0	30.0	37.5	12.7	1.2	32	19.5	170	6	20.2	MDP601356*424530++SJ
	35	42.0	45.0	30.0	37.5	20.3	1.2	32	19.5	170	6	20.2	MDP601356*424530++SR
	40	42.0	45.0	30.0	37.5	12.7	1.2	32	19.5	170	5.1	23.2	MDP601406*424530++SJ
	40	42.0	45.0	30.0	37.5	20.3	1.2	32	19.5	170	5.1	23.2	MDP601406*424530++SR
	40	57.5	45.0	25.0	52.5	12.7	1.2	17	35	345	9.8	12.5	MDP601406*574525++WJ
	45	42.0	50.0	35.0	37.5	12.7	1.2	32	19.5	170	4.6	26	MDP601456*425035++SJ
	45	42.0	50.0	35.0	37.5	20.3	1.2	32	19.5	170	4.6	26	MDP601456*425035++SR
	45	57.5	45.0	25.0	52.5	12.7	1.2	17	35	345	8.7	14	MDP601456*574525++WJ
	50	42.0	50.0	35.0	37.5	20.3	1.2	32	19.5	170	4.1	28.7	MDP601506*425035++SR
	50	42.0	46.0	35.0	37.5	20.3	1.2	32	19.5	170	4.1	28.7	MDP601506*424635++SR
	50	57.5	45.0	25.0	52.5	12.7	1.2	17	35	345	7.8	15.5	MDP601506*574525++WJ
	55	42.0	50.0	35.0	37.5	20.3	1.2	32	19.5	170	3.7	31.7	MDP601556*425035++SR
	55	57.5	45.0	30.0	52.5	12.7	1.2	17	35	345	7.1	17	MDP601556*574530++WJ
	55	57.5	45.0	30.0	52.5	20.3	1.2	17	35	345	7.1	17	MDP601556*574530++WR
	60	42.0	55.0	40.0	37.5	20.3	1.2	32	19.5	170	3.5	34.7	MDP601606*425540++SR
	60	57.5	45.0	30.0	52.5	20.3	1.2	17	35	345	6.5	18.7	MDP601606*574530++WR
	65	42.0	55.0	40.0	37.5	20.3	1.2	32	19.5	170	3.2	35	MDP601656*425540++SR
	65	57.5	50.0	35.0	52.5	12.7	1.2	17	35	345	6	20.2	MDP601656*575035++WJ
	65	57.5	50.0	35.0	52.5	20.3	1.2	17	35	345	6	20.2	MDP601656*575035++WR
	70	42.0	55.0	40.0	37.5	20.3	1.2	32	19.5	170	3	35	MDP601706*425540++SR
	70	57.5	50.0	35.0	52.5	20.3	1.2	17	35	345	5.6	21.5	MDP601706*575035++WR
	75	42.0	62.0	45.0	37.5	20.3	1.2	32	19.5	170	2.8	35	MDP601756*426245++SR
	75	57.5	50.0	35.0	52.5	20.3	1.2	17	35	345	5.2	23.3	MDP601756*575035++WR
	80	42.0	62.0	45.0	37.5	20.3	1.2	32	19.5	170	2.6	35	MDP601806*426245++SR
	80	57.5	50.0	35.0	52.5	20.3	1.2	17	35	345	4.9	24.8	MDP601806*575035++WR
	85	42.0	62.0	45.0	37.5	20.3	1.2	32	19.5	170	2.5	35.2	MDP601856*426245++SR
	85	57.5	55.0	45.0	52.5	20.3	1.2	17	35	345	4.8	25.3	MDP601856*575545++WR
90	57.5	55.0	45.0	52.5	20.3	1.2	17	35	345	4.5	25.9	MDP601906*575545++WR	
95	57.5	55.0	45.0	52.5	20.3	1.2	17	35	345	4.4	27.5	MDP601956*575545++WR	
100	57.5	55.0	45.0	52.5	20.3	1.2	17	35	345	4.1	28.8	MDP601107*575545++WR	
110	57.5	55.0	45.0	52.5	20.3	1.2	17	35	345	3.8	31.7	MDP601117*575545++WR	
120	57.5	64.5	45.0	52.5	20.3	1.2	17	35	345	3.4	34.6	MDP601127*576445++WR	
130	57.5	64.5	45.0	52.5	20.3	1.2	17	35	345	3.2	35	MDP601137*576445++WR	
140	57.5	64.5	45.0	52.5	20.3	1.2	17	35	345	3	35	MDP601147*576445++WR	
200	57.5	78.0	50.0	52.5	20.3	1.2	17	35	345	2.5	35	MDP601207*577850++WR	
800Vdc	2.0	32.0	18.0	9.0	27.5	-	0.8	65	10	95	45.4	2.9	MDP801205*321809++RN
	3.0	32.0	20.0	11.0	27.5	-	0.8	65	10	95	30.3	4.4	MDP801305*322011++RN
	3.3	32.0	30.0	16.0	27.5	-	0.8	65	10	95	18.8	7	MDP801335*323016++RN
	4.0	32.0	25.0	13.0	27.5	-	0.8	65	10	95	22.7	5.8	MDP801405*322513++RN

Note: "*" indicates the product's capacity deviation, J=±5%, K=±10%, "++" indicates the internal number.



MDP

List of Standard Products

Rated voltage	CN (μF)	W±1 (mm)	H±1 (mm)	T±1 (mm)	P (mm)	P1 (mm)	d±0.05 (mm)	dv/dt (V/μs)	tanδ(×10 ⁻⁴)		ESR@10kHz (mΩ)	I _{max} (A)	Product Code
									1kHz	10kHz			
800Vdc	5.0	32.0	24.5	15.0	27.5	-	0.8	65	10	95	18.2	7.3	MDP801505*322415++RN
	6.0	32.0	30.0	16.0	27.5	-	0.8	65	10	95	15.1	8.7	MDP801605*323016++RN
	7.0	32.0	30.0	16.0	27.5	-	0.8	65	10	95	13	10.2	MDP801705*323016++RN
	8.0	32.0	33.0	18.0	27.5	-	0.8	65	10	95	12.5	10.5	MDP801805*323318++RN
	8.0	41.0	30.0	16.0	37.5	-	1.0	30	18	160	22.3	5.4	MDP801805*413016++SN
	9.0	32.0	33.0	18.0	27.5	-	0.8	65	10	95	11.1	11.8	MDP801905*323318++RN
	9.0	41.0	30.0	16.0	37.5	-	1.0	30	18	160	19.8	6.1	MDP801905*413016++SN
	10	32.0	37.0	22.0	27.5	-	0.8	65	10	95	11	12	MDP801106*323722++RN
	10	32.0	37.0	22.0	27.5	10.2	0.8	65	10	95	9.1	14.5	MDP801106*323722++RY
	10	41.0	33.5	18.5	37.5	-	1.0	30	18	160	17.8	6.7	MDP801106*413318++SN
	11	32.0	37.0	22.0	27.5	-	0.8	65	10	95	10	12	MDP801116*323722++RN
	11	32.0	37.0	22.0	27.5	10.2	0.8	65	10	95	8.3	16	MDP801116*323722++RY
	12	32.0	37.0	22.0	27.5	-	0.8	65	10	95	9.3	12	MDP801126*323722++RN
	12	32.0	37.0	22.0	27.5	10.2	0.8	65	10	95	7.6	16	MDP801126*323722++RY
	12	41.0	33.5	18.5	37.5	-	1.0	30	18	160	14.9	8.1	MDP801126*413318++SN
	13	32.0	37.0	22.0	27.5	-	0.8	65	10	95	8.8	12	MDP801136*323722++RN
	13	32.0	37.0	22.0	27.5	12.7	0.8	65	10	95	8.1	16.2	MDP801136*323722++RJ
	14	32.0	37.0	22.0	27.5	-	0.8	65	10	95	8.2	12	MDP801146*323722++RN
	14	32.0	37.0	22.0	27.5	10.2	0.8	65	10	95	7.6	16.5	MDP801146*323722++RY
	14	41.0	33.5	18.5	37.5	-	1.0	30	18	160	13.8	9.4	MDP801146*413318++SN
	15	42.0	40.0	20.0	37.5	10.2	1.0	32	18	160	11.8	10.2	MDP801156*424020++SY
	20	42.0	44.0	24.0	37.5	12.7	1.0	32	18	160	8.9	13.5	MDP801206*424424++SJ
	25	42.0	44.0	24.0	37.5	12.7	1.0	32	18	160	7.1	16.8	MDP801256*424424++SJ
	25	57.5	45.0	25.0	52.5	12.7	1.2	15	33	320	14.3	8.4	MDP801256*574525++WJ
	30	42.0	45.0	30.0	37.5	12.7	1.2	30	18	160	5.9	20.2	MDP801306*424530++SJ
	30	42.0	45.0	30.0	37.5	20.3	1.2	30	18	160	5.9	20.2	MDP801306*424530++SR
	30	57.5	45.0	25.0	52.5	12.7	1.2	15	33	320	11.9	10.1	MDP801306*574525++WJ
	35	42.0	50.0	35.0	37.5	20.3	1.2	30	18	160	5.5	22	MDP801356*425035++SR
	35	57.5	45.0	25.0	52.5	12.7	1.2	15	33	320	10.2	11.8	MDP801356*574525++WJ
	40	42.0	50.0	35.0	37.5	20.3	1.2	30	18	160	4.8	25.1	MDP801406*425035++SR
	40	57.5	44.0	30.0	52.5	12.7	1.2	15	33	320	8.9	13.5	MDP801406*574430++WJ
	40	57.5	44.0	30.0	52.5	20.3	1.2	15	33	320	8.9	13.5	MDP801406*574430++WR
	45	42.0	55.0	40.0	37.5	20.3	1.2	30	18	160	4.2	28.3	MDP801456*425540++SR
45	57.5	44.0	30.0	52.5	12.7	1.2	15	33	320	7.9	15.1	MDP801456*574430++WJ	
45	57.5	44.0	30.0	52.5	20.3	1.2	15	33	320	7.9	15.1	MDP801456*574430++WR	
50	42.0	55.0	40.0	37.5	20.3	1.2	30	18	160	3.8	31.4	MDP801506*425540++SR	
50	57.5	50.0	35.0	52.5	12.7	1.2	15	33	320	7.1	16.8	MDP801506*575035++WJ	
50	57.5	50.0	35.0	52.5	20.3	1.2	15	33	320	7.1	16.8	MDP801506*575035++WR	
55	42.0	60.0	45.0	37.5	20.3	1.2	30	18	160	3.5	34.5	MDP801556*426045++SR	
55	57.5	50.0	35.0	52.5	20.3	1.2	15	33	320	6.5	18.5	MDP801556*575035++WR	
60	42.0	62.0	45.0	37.5	20.3	1.2	32	18	160	2.8	35.1	MDP801606*426245++SR	
60	57.5	50.0	35.0	52.5	20.3	1.2	15	33	320	5.9	20.2	MDP801606*575035++WR	
65	42.0	62.0	45.0	37.5	20.3	1.2	32	18	160	2.9	35	MDP801656*426245++SR	

Note: "*" indicates the product's capacity deviation, J=±5%, K=±10%, "++" indicates the internal number.



MDP

■ List of Standard Products

Rated voltage	C _N (μF)	W±1 (mm)	H±1 (mm)	T±1 (mm)	P (mm)	P1 (mm)	d±0.05 (mm)	dv/dt (V/μs)	tanδ(×10 ⁻⁴)		ESR@10kHz (mΩ)	I _{max} (A)	Product Code
									1kHz	10kHz			
800Vdc	65	57.5	55.0	45.0	52.5	20.3	1.2	15	33	320	5.5	21.9	MDP801656*575545++WR
	70	42.0	62.0	45.0	37.5	20.3	1.2	32	20	170	2.8	35	MDP801706*426245++SR
	70	57.5	55.0	45.0	52.5	20.3	1.2	15	33	320	5.1	23.6	MDP801706*575545++WR
	75	42.0	62.0	45.0	37.5	20.3	1.2	32	20	170	2.8	35	MDP801756*426245++SR
	75	57.5	55.0	45.0	52.5	20.3	1.2	15	33	320	4.8	25.2	MDP801756*575545++WR
	80	57.5	55.0	45.0	52.5	20.3	1.2	15	33	320	4.6	25.9	MDP801806*575545++WR
	85	57.5	55.0	45.0	52.5	20.3	1.2	15	33	320	4.5	26.7	MDP801856*575545++WR
	90	57.5	64.5	35.0	52.5	20.3	1.2	17	32	318	4.1	28.4	MDP801906*576435++WR
	90	57.5	55.0	45.0	52.5	20.3	1.2	15	32	318	4	29.8	MDP801906*575545++WR
	95	57.5	64.5	45.0	52.5	20.3	1.2	15	33	320	4	29.8	MDP801956*576445++WR
	100	57.5	64.5	45.0	52.5	20.3	1.2	14	20	225	3.7	31.5	MDP801107*576445++WR
	110	57.5	64.5	45.0	52.5	20.3	1.2	15	20	230	3.9	34.5	MDP801117*576445++WR
	120	57.5	64.5	45.0	52.5	20.3	1.2	17	32	318	3.7	31.5	MDP801127*576445++WR
	120	57.5	80.0	35.0	52.5	20.3	1.2	17	32	318	3.7	31.5	MDP801127*578035++WR
160	57.5	78.0	50.0	52.5	20.3	1.2	17	32	318	2.9	35	MDP801167*577850++WR	
900Vdc	1.0	32.0	18.0	9.0	27.5	-	0.8	70	9	90	86	1.5	MDP901105*321809++RN
	2.0	32.0	20.0	11.0	27.5	-	0.8	70	9	90	43	3.1	MDP901205*322011++RN
	3.0	32.0	22.0	13.0	27.5	-	0.8	70	9	90	28.7	4.6	MDP901305*322213++RN
	4.0	32.0	24.5	15.0	27.5	-	0.8	70	9	90	21.5	6.1	MDP901405*322415++RN
	4.7	41.0	26.0	15.0	37.5	-	1.0	35	17	150	35.6	3.4	MDP901475*412615++SN
	5.0	32.0	30.0	16.0	27.5	-	0.8	70	9	90	17.2	7.7	MDP901505*323016++RN
	5.0	41.0	30.0	16.0	37.5	-	1.0	35	17	150	33.4	3.6	MDP901505*413016++SN
	6.0	32.0	33.0	18.0	27.5	-	0.8	70	9	90	18	6.9	MDP901605*323318++RN
	6.0	41.0	30.0	16.0	37.5	-	1.0	35	17	150	27.9	4.3	MDP901605*413016++SN
	7.0	32.0	33.0	18.0	27.5	-	0.8	70	9	90	13	10.2	MDP901705*323318++RN
	7.0	41.0	30.0	16.0	37.5	-	1.0	35	17	150	23.9	5	MDP901705*413016++SN
	8.0	32.0	37.0	22.0	27.5	-	0.8	70	9	90	11.5	11.4	MDP901805*323722++RN
	8.0	32.0	37.0	22.0	27.5	10.2	0.8	70	9	90	10.7	12.3	MDP901805*323722++RY
	8.0	41.0	33.0	18.0	37.5	-	1.0	35	17	150	20.9	5.7	MDP901805*413318++SN
	9.0	32.0	37.0	22.0	27.5	-	0.8	70	9	90	10.4	12	MDP901905*323722++RN
	9.0	32.0	37.0	22.0	27.5	12.7	0.8	70	9	90	9.6	13.8	MDP901905*323722++RJ
	10	32.0	37.0	22.0	27.5	10.2	0.8	70	9	90	8.5	15.5	MDP901106*323722++RY
	10	32.0	37.0	22.0	27.5	12.7	0.8	70	9	90	8.6	15.4	MDP901106*323722++RJ
	10	42.0	40.0	20.0	37.5	10.2	1.0	35	17	150	16.7	7.2	MDP901106*424020++SY
	11	42.0	40.0	20.0	37.5	10.2	1.0	35	17	150	16.5	7.4	MDP901116*424020++SY
	12	41.0	37.0	22.0	37.5	10.2	1.0	35	17	150	13.9	8.6	MDP901126*413722++SY
	15	42.0	37.0	28.0	37.5	10.2	1.0	35	17	150	11	10.9	MDP901156*423728++SY
	15	42.0	44.0	24.0	37.5	10.2	1.0	35	17	150	11	10.9	MDP901156*424424++SY
	15	57.5	45.0	25.0	52.5	10.2	1.2	15	31	300	22.3	5.4	MDP901156*574525++WY
18	42.0	44.0	24.0	37.5	12.7	1.0	35	17	150	9.3	12.9	MDP901186*424424++SJ	
20	42.0	44.0	24.0	37.5	12.7	1.0	35	17	150	8.4	14.4	MDP901206*424424++SJ	
20	57.5	45.0	25.0	52.5	12.7	1.2	15	31	300	16.7	7.2	MDP901206*574525++WJ	
25	42.0	45.0	30.0	37.5	12.7	1.2	35	17	150	6.7	17.9	MDP901256*424530++SJ	

Note: "*" indicates the product's capacity deviation, J=±5%, K=±10%, "++" indicates the internal number.



MDP

List of Standard Products

Rated voltage	C _N (μF)	W±1 (mm)	H±1 (mm)	T±1 (mm)	P (mm)	P1 (mm)	d±0.05 (mm)	dv/dt (V/μs)	tanδ(×10 ⁻⁴)		ESR@10kHz (mΩ)	I _{max} (A)	Product Code
									1kHz	10kHz			
900Vdc	25	42.0	45.0	30.0	37.5	20.3	1.2	35	17	150	6.7	17.9	MDP901256*424530++SR
	25	57.5	45.0	25.0	52.5	12.7	1.2	15	31	300	13.4	9	MDP901256*574525++WJ
	30	42.0	46.0	35.0	37.5	20.3	1.2	35	17	150	5.5	21.6	MDP901306*424635++SR
	30	42.0	50.0	35.0	37.5	20.3	1.2	35	17	150	5.5	21.6	MDP901306*425035++SR
	30	57.5	44.0	30.0	52.5	12.7	1.2	15	31	300	11.1	10.8	MDP901306*574430++WJ
	30	57.5	44.0	30.0	52.5	20.3	1.2	15	31	300	11.1	10.8	MDP901306*574430++WR
	35	42.0	55.0	40.0	37.5	20.3	1.2	35	17	150	5.1	23.4	MDP901356*425540++SR
	35	57.5	45.0	30.0	52.5	12.7	1.2	15	31	300	9.5	12.7	MDP901356*574530++WJ
	35	57.5	45.0	30.0	52.5	20.3	1.2	15	31	300	9.5	12.7	MDP901356*574530++WR
	40	42.0	55.0	40.0	37.5	20.3	1.2	35	17	150	4.4	26.9	MDP901406*425540++SR
	40	57.5	50.0	35.0	52.5	20.3	1.2	16	17	180	7.6	17.5	MDP901406*575035++WR
	45	42.0	60.0	45.0	37.5	20.3	1.2	35	17	150	4	30.1	MDP901456*426045++SR
	45	57.5	50.0	35.0	52.5	20.3	1.2	15	31	300	7.4	16.1	MDP901456*575035++WR
	50	42.0	62.0	45.0	37.5	20.3	1.2	35	17	150	3.6	33.6	MDP901506*426245++SR
	50	57.5	50.0	35.0	52.5	20.3	1.2	17	30.5	298	6.5	18	MDP901506*575035++WR
	55	57.5	56.0	35.0	52.5	20.3	1.2	17	30.5	298	6	19.8	MDP901556*575635++WR
	60	57.5	55.0	45.0	52.5	20.3	1.2	16	18	190	5.6	21.5	MDP901606*575545++WR
	65	57.5	64.5	35.0	52.5	20.3	1.2	17	30.5	298	5	23.4	MDP901656*576435++WR
	65	57.5	55.0	45.0	52.5	20.3	1.2	17	30.5	298	5.1	23.3	MDP901656*575545++WR
	65	57.5	55.0	45.0	52.5	20.3	1.2	17	30.5	298	5	23.4	MDP901656*575545++WR
70	57.5	64.5	45.0	52.5	20.3	1.2	15	31	300	4.8	25.1	MDP901706*576445++WR	
70	57.5	70.0	35.0	52.5	20.3	1.2	17	30.5	298	4.7	25.2	MDP901706*577035++WR	
75	57.5	64.5	45.0	52.5	20.3	1.2	16	18	195	4.7	25.7	MDP901756*576445++WR	
80	57.5	64.5	45.0	52.5	20.3	1.2	16	18	200	4.5	26.8	MDP901806*576445++WR	
85	57.5	64.5	45.0	52.5	20.3	1.2	17	30.5	298	4.1	28.5	MDP901856*576445++WR	
85	57.5	80.0	35.0	52.5	20.3	1.2	17	30.5	298	4.1	28.5	MDP901856*578035++WR	
120	57.5	78.0	50.0	52.5	20.3	1.2	17	30.5	298	3	35	MDP901127*577850++WR	
1000Vdc	1.0	32.0	18.0	9.0	27.5	-	0.8	75	8	80	76.4	1.7	MDP102105*321809++RN
	2.0	32.0	22.0	13.0	27.5	-	0.8	75	8	80	38.2	3.5	MDP102205*322213++RN
	3.0	32.0	24.5	15.0	27.5	-	0.8	75	8	80	25.5	5.2	MDP102305*322415++RN
	4.0	32.0	30.0	16.0	27.5	-	0.8	75	8	80	19.1	6.9	MDP102405*323016++RN
	5.0	32.0	33.0	18.0	27.5	-	0.8	75	8	80	15.3	8.6	MDP102505*323318++RN
	5.0	41.0	30.0	16.0	37.5	-	1.0	37	15	140	31.2	3.8	MDP102505*413016++SN
	6.0	32.0	33.0	18.0	27.5	-	0.8	75	8	80	14.9	8.9	MDP102605*323318++RN
	6.0	41.0	30.0	16.0	37.5	-	1.0	37	15	140	26	4.6	MDP102605*413016++SN
	7.0	32.0	37.0	22.0	27.5	-	0.8	75	8	80	14.5	9.4	MDP102705*323722++RN
	7.0	32.0	37.0	22.0	27.5	12.7	0.8	75	8	80	11.4	11.6	MDP102705*323722++RJ
	7.0	41.0	33.0	18.0	37.5	-	1.0	37	15	140	22.3	5.4	MDP102705*413318++SN
	8.0	32.0	37.0	22.0	27.5	-	0.8	75	8	80	13	10.8	MDP102805*323722++RN
	8.0	32.0	37.0	22.0	27.5	12.7	0.8	75	8	80	10	13.3	MDP102805*323722++RJ
	8.0	41.0	33.0	18.0	37.5	-	1.0	37	15	140	19.5	6.2	MDP102805*413318++SN
	8.5	32.0	37.0	22.0	27.5	12.7	0.8	77	8	79	9.9	13.4	MDP102855*323722++RJ
10	42.0	40.0	20.0	37.5	-	1.0	37	15	140	15.6	6.7	MDP102106*424020++SN	

Note: "*" indicates the product's capacity deviation, J=±5%, K=±10%, "++" indicates the internal number.



MDP

List of Standard Products

Rated voltage	C _N (μF)	W±1 (mm)	H±1 (mm)	T±1 (mm)	P (mm)	P1 (mm)	d±0.05 (mm)	dv/dt (V/μs)	tanδ(×10 ⁻⁴)		ESR@10kHz (mΩ)	I _{max} (A)	Product Code
									1kHz	10kHz			
1000Vdc	10	42.0	40.0	20.0	37.5	10.2	1.0	37	15	140	15.6	7.7	MDP102106*424020++SY
	12	41.0	37.0	22.0	37.5	12.7	1.0	37	15	140	13	9.2	MDP102126*413722++SJ
	12	42.0	40.0	20.0	37.5	10.2	1.0	40	15	138	13	9.3	MDP102126*424020++SY
	15	42.0	44.0	24.0	37.5	12.7	1.0	37	15	140	10.3	11.6	MDP102156*424424++SJ
	15	42.0	37.0	28.0	37.5	10.2	1.0	40	15	140	10.4	11.5	MDP102156*423728++SY
	15	42.0	44.0	24.0	37.5	10.2	1.0	40	15	140	10.3	11.6	MDP102156*424424++SY
	15	57.5	45.0	25.0	52.5	12.7	1.2	17	28	280	20.8	5.8	MDP102156*574525++WJ
	18	42.0	45.0	30.0	37.5	12.7	1.2	37	15	140	8.7	13.8	MDP102186*424530++SJ
	18	42.0	45.0	30.0	37.5	20.3	1.2	37	15	140	8.7	13.8	MDP102186*424530++SR
	20	42.0	45.0	30.0	37.5	12.7	1.2	37	15	140	7.8	15.4	MDP102206*424530++SJ
	20	42.0	45.0	30.0	37.5	20.3	1.2	40	15	138	7.7	15.5	MDP102206*424530++SR
	20	57.5	45.0	25.0	52.5	12.7	1.2	17	28	280	15.6	7.7	MDP102206*574525++WJ
	25	42.0	46.0	35.0	37.5	20.3	1.2	37	15	138	6.2	19.2	MDP102256*424635++SR
	25	42.0	50.0	35.0	37.5	20.3	1.2	37	15	140	6.2	19.2	MDP102256*425035++SR
	25	57.5	45.0	25.0	52.5	12.7	1.2	17	28	280	12.5	9.6	MDP102256*574525++WJ
	28	42.0	50.0	35.0	37.5	20.3	1.2	40	15	138	6	19.5	MDP102286*425035++SR
	30	42.0	55.0	40.0	37.5	20.3	1.2	37	15	140	5.2	23.1	MDP102306*425540++SR
	30	57.5	44.0	30.0	52.5	12.7	1.2	17	28	280	10.4	11.5	MDP102306*574430++WJ
	30	57.5	44.0	30.0	52.5	20.3	1.2	17	28	280	10.4	11.5	MDP102306*574330++WR
	30	57.5	45.0	30.0	52.5	12.7	1.2	17	28	280	10.4	11.5	MDP102306*574530++WJ
	30	57.5	45.0	30.0	52.5	20.3	1.2	17	28	280	10.4	11.5	MDP102306*574530++WR
	35	42.0	55.0	40.0	37.5	20.3	1.2	37	15	140	4.8	25.1	MDP102356*425540++SR
	35	57.5	50.0	35.0	52.5	20.3	1.2	17	28	280	8.9	13.5	MDP102356*575035++WR
	40	42.0	60.0	45.0	37.5	20.3	1.2	37	15	140	4.2	28.7	MDP102406*426045++SR
	40	57.5	50.0	35.0	52.5	20.3	1.2	17	28	280	7.8	15.4	MDP102406*575035++WR
	45	42.0	62.0	45.0	37.5	20.3	1.2	40	15	138	4.1	29	MDP102456*426245++SR
	45	57.5	55.0	45.0	52.5	20.3	1.2	17	28	280	6.9	17.3	MDP102456*575545++WR
	45	57.5	56.0	35.0	52.5	20.3	1.2	20	27.5	278	6.8	17.4	MDP102456*575635++WR
	50	57.5	55.0	45.0	52.5	20.3	1.2	17	28	280	6.2	19.2	MDP102506*575545++WR
	55	57.5	64.5	35.0	52.5	20.3	1.2	20	27.5	278	5.6	21.2	MDP102556*576435++WR
55	57.5	55.0	45.0	52.5	20.3	1.2	17	28	280	5.7	21.1	MDP102556*575545++WR	
60	57.5	70.0	35.0	52.5	20.3	1.2	20	27.5	278	5.1	23.2	MDP102606*577035++WR	
60	57.5	64.5	45.0	52.5	20.3	1.2	17	28	280	5.2	23.1	MDP102606*576445++WR	
70	57.5	64.5	45.0	52.5	20.3	1.2	17	28	280	4.5	26.9	MDP102706*576445++WR	
70	57.5	80.0	35.0	52.5	20.3	1.2	20	27.5	278	4.4	27	MDP102706*578035++WR	
100	57.5	78.0	50.0	52.5	20.3	1.2	20	27.5	278	3.2	35	MDP102107*577850++WR	
1100Vdc	0.68	32.0	20.0	11.0	27.5	-	0.8	80	8	70	80	1.7	MDP112684*322011++RN
	1.0	32.0	20.0	11.0	27.5	-	0.8	80	8	70	59.4	2.2	MDP112105*322011++RN
	1.5	32.0	22.0	13.0	27.5	-	0.8	80	8	70	55.7	2.4	MDP112155*322213++RN
	2.0	32.0	25.0	13.0	27.5	-	0.8	80	8	70	27.9	4.7	MDP112205*322513++RN
	3.0	32.0	30.0	16.0	27.5	-	0.8	80	8	70	20.4	6.5	MDP112305*323016++RN
	3.0	41.0	30.0	16.0	37.5	-	1.0	40	15	130	48.3	2.5	MDP112305*413016++SN
	4.0	32.0	33.0	18.0	27.5	-	0.8	80	8	70	15.3	8.6	MDP112405*323318++RN

Note: "*" indicates the product's capacity deviation, J=±5%, K=±10%, "++" indicates the internal number.



MDP

■ List of Standard Products

Rated voltage	C _N (μF)	W±1 (mm)	H±1 (mm)	T±1 (mm)	P (mm)	P1 (mm)	d±0.05 (mm)	dv/dt (V/μs)	tanδ(×10 ⁻⁴)		ESR@10kHz (mΩ)	I _{max} (A)	Product Code
									1kHz	10kHz			
1100Vdc	4.0	41.0	30.0	16.0	37.5	-	1.0	40	15	130	36.2	3.3	MDP112405*413016++SN
	4.7	41.0	33.5	18.5	37.5	-	1.0	40	15	130	30.8	3.9	MDP112475*413318++SN
	5.0	32.0	37.0	22.0	27.5	-	0.8	80	8	70	14	9.8	MDP112505*323722++RN
	5.0	32.0	37.0	22.0	27.5	10.2	0.8	80	8	70	12.3	10.8	MDP112505*323722++RJ
	5.0	41.0	33.5	18.5	37.5	-	1.0	40	15	130	29	4.1	MDP112505*413318++SN
	6.0	32.0	37.0	22.0	27.5	-	0.8	80	8	70	12.3	10.8	MDP112605*323722++RN
	6.0	32.0	37.0	22.0	27.5	10.2	0.8	80	8	70	10.2	12.9	MDP112605*323722++RJ
	6.0	41.0	33.5	18.5	37.5	-	1.0	40	15	130	24.2	5	MDP112605*413318++SN
	7.0	42.0	40.0	20.0	37.5	10.2	1.0	40	15	130	20.7	5.8	MDP112705*424020++SY
	8.0	41.0	37.0	22.0	37.5	10.2	1.0	40	15	130	18.1	6.6	MDP112805*413722++SY
	9.0	41.0	37.0	22.0	37.5	12.7	1.0	40	15	130	16.1	7.5	MDP112905*413722++SJ
	10	42.0	44.0	24.0	37.5	10.2	1.0	42	14.8	128	14.4	8.4	MDP112106*424424++SY
	12	42.0	44.0	24.0	37.5	12.7	1.0	40	15	130	12.1	9.9	MDP112126*424424++SJ
	12	42.0	44.0	24.0	37.5	-	1.0	40	15	130	14	8.6	MDP112126*424424++SN
	15	42.0	45.0	30.0	37.5	12.7	1.2	40	15	130	9.7	12.4	MDP112156*424530++SJ
	15	42.0	45.0	30.0	37.5	20.3	1.2	40	15	130	9.7	12.4	MDP112156*424530++SR
	15	57.5	45.0	25.0	52.5	12.7	1.2	20	27	260	19.3	6.2	MDP112156*574525++WJ
	18	42.0	50.0	35.0	37.5	20.3	1.2	40	15	130	8.1	14.9	MDP112186*425035++SR
	20	42.0	50.0	35.0	37.5	20.3	1.2	40	15	130	7.2	16.6	MDP112206*425035++SR
	20	57.5	45.0	30.0	52.5	12.7	1.2	20	27	260	14.4	8.3	MDP112206*574530++WJ
	25	42.0	55.0	40.0	37.5	20.3	1.2	42	15	130	5.8	20.7	MDP112256*425540++SR
	25	57.5	50.0	35.0	52.5	20.3	1.2	20	27	260	11.6	10.4	MDP112256*575035++WR
	30	42.0	62.0	45.0	37.5	20.3	1.2	42	14.8	128	4.7	24.9	MDP112306*426245++SR
	30	57.5	50.0	35.0	52.5	20.3	1.2	20	27	260	9.7	12.4	MDP112306*575035++WR
	35	57.5	55.0	45.0	52.5	20.3	1.2	20	27	260	8.4	14.3	MDP112356*575545++WR
	35	57.5	56.0	35.0	52.5	20.3	1.2	22	26.8	258	8.3	14.3	MDP112356*575635++WR
	40	57.5	55.0	45.0	52.5	20.3	1.2	20	27	260	7.8	15.5	MDP112406*575545++WR
	45	57.5	55.0	45.0	52.5	20.3	1.2	20	27	260	6.9	17.4	MDP112456*575545++WR
45	57.5	70.0	35.0	52.5	20.3	1.2	22	26.8	258	6.8	17.5	MDP112456*577035++WR	
50	57.5	64.5	45.0	52.5	20.3	1.2	20	27	260	6.2	19.3	MDP112506*576445++WR	
50	57.5	80.0	35.0	52.5	20.3	1.2	20	27.5	278	4.6	25	MDP112506*578035++WR	
55	57.5	64.5	45.0	52.5	20.3	1.2	20	27	260	5.6	21.3	MDP112556*576445++WR	
75	57.5	78.0	50.0	52.5	20.3	1.2	20	27	260	3.6	35	MDP112756*577850++WR	
1200Vdc	1.0	32.0	20.0	11.0	27.5	-	0.8	90	7	55	39.5	3.5	MDP122105*322011++RN
	2.0	32.0	24.5	15.0	27.5	-	0.8	90	7	55	26.3	5	MDP122205*322415++RN
	3.0	32.0	30.0	16.0	27.5	-	0.8	90	7	55	17.5	7.5	MDP122305*323016++RN
	4.0	32.0	33.0	18.0	27.5	-	0.8	90	7	55	13.9	9.5	MDP122405*323318++RN
	5.0	32.0	37.0	22.0	27.5	-	0.8	90	7	55	12.7	10.4	MDP122505*323722++RN
	5.0	32.0	37.0	22.0	27.5	10.2	0.8	90	7	55	11.1	11.8	MDP122505*323722++RJ
	3.0	41.0	30.0	16.0	37.5	-	1.0	45	13	100	37.2	3.2	MDP122305*413016++SN
	4.0	41.0	30.0	16.0	37.5	-	1.0	45	13	100	27.9	4.3	MDP122405*413016++SN
	5.0	41.0	33.5	18.5	37.5	-	1.0	45	13	100	22.3	5.4	MDP122505*413318++SN
	6.0	42.0	40.0	20.0	37.5	10.2	1.0	47	12.8	98	18.5	6.6	MDP122605*424020++SY

Note: "*" indicates the product's capacity deviation, J=±5%, K=±10%, "++" indicates the internal number.



MDP

List of Standard Products

Rated voltage	C _N (μF)	W±1 (mm)	H±1 (mm)	T±1 (mm)	P (mm)	P1 (mm)	d±0.05 (mm)	dv/dt (V/μs)	tanδ(×10 ⁻⁴)		ESR@10kHz (mΩ)	I _{max} (A)	Product Code
									1kHz	10kHz			
1200Vdc	7.0	42.0	37.0	28.0	37.5	10.2	1.0	47	12.8	98	13.8	8.7	MDP122705*423728++SY
	8.0	42.0	44.0	24.0	37.5	10.2	1.0	45	13	100	13.9	8.6	MDP122805*424424++SY
	9.0	42.0	44.0	24.0	37.5	12.7	1.0	45	13	100	12.4	9.7	MDP122905*424424++SJ
	10	42.0	44.0	24.0	37.5	12.7	1.0	45	13	100	11.1	10.8	MDP122106*424424++SJ
	12	42.0	45.0	30.0	37.5	12.7	1.2	45	13	100	9.3	12.9	MDP122126*424530++SJ
	12	42.0	45.0	30.0	37.5	20.3	1.2	45	13	100	9.3	12.9	MDP122126*424530++SR
	12	57.5	45.0	25.0	52.5	12.7	1.2	23	24	200	19.9	6	MDP122126*574525++WJ
	14	42.0	46.0	35.0	37.5	20.3	1.2	47	12.8	98	8.4	14.6	MDP122146*424635++SR
	15	42.0	50.0	35.0	37.5	20.3	1.2	45	13	100	7.4	16.1	MDP122156*425035++SR
	15	57.5	45.0	25.0	52.5	12.7	1.2	23	24	200	15.9	7.5	MDP122156*574525++WJ
	18	42.0	50.0	35.0	37.5	20.3	1.2	45	13	100	6.6	18.1	MDP122186*425035++SR
	20	42.0	55.0	40.0	37.5	20.3	1.2	45	13	100	6	20.1	MDP122206*425540++SR
	20	57.5	45.0	30.0	52.5	12.7	1.2	23	24	200	11.9	10	MDP122206*574530++WJ
	20	57.5	45.0	30.0	52.5	20.3	1.2	23	24	200	11.9	10	MDP122206*574530++WR
	25	42.0	62.0	45.0	37.5	20.3	1.2	47	12.8	98	4.7	25.2	MDP122256*426245++SR
	25	57.5	50.0	35.0	52.5	20.3	1.2	25	23.8	198	9.5	12.7	MDP122256*575035++WR
	30	57.5	56.0	35.0	52.5	20.3	1.2	25	23.8	198	7.9	15.2	MDP122306*575635++WR
	30	57.5	55.0	45.0	52.5	20.3	1.2	23	24	200	8	15.1	MDP122306*575545++WR
	35	57.5	64.5	35.0	52.5	20.3	1.2	25	23.8	198	6.7	17.7	MDP122356*576435++WR
	35	57.5	55.0	45.0	52.5	20.3	1.2	23	24	200	6.8	17.6	MDP122356*575545++WR
38	57.5	55.0	45.0	52.5	20.3	1.2	25	23.8	198	6.4	19.1	MDP122386*575545++WR	
40	57.5	64.5	45.0	52.5	20.3	1.2	23	24	200	6	20.1	MDP122406*576445++WR	
40	57.5	70.0	35.0	52.5	20.3	1.2	25	23.8	198	5.9	20.2	MDP122406*577035++WR	
45	57.5	64.5	45.0	52.5	20.3	1.2	25	23.8	198	5.2	22.7	MDP122456*576445++WR	
45	57.5	80.0	35.0	52.5	20.3	1.2	25	23.8	198	5.2	22.7	MDP122456*578035++WR	
70	57.5	78.0	50.0	52.5	20.3	1.2	25	23.8	198	3.7	32	MDP122706*577850++WR	
1400Vdc	0.56	32.0	20.0	11.0	27.5	-	0.8	120	8	24	33	3.3	MDP142564*322011++RN
	0.68	32.0	22.0	13.0	27.5	-	-	120	8	24	27.7	3.9	MDP142684*322213++RN
	1.0	32.0	22.0	13.0	27.5	-	-	120	8	25	19.9	4.8	MDP142105*322213++RN
	1.5	32.0	24.5	15.0	27.5	-	-	120	8	26	13.6	6.3	MDP142155*322415++RN
	2.0	32.0	28.0	18.0	27.5	-	-	120	8	27	10.2	8.2	MDP142205*322818++RN
	2.0	42.0	24.0	15.0	37.5	-	-	80	8	50	21.2	5.6	MDP142205*422415++SN
	2.7	42.0	28.0	17.0	37.5	-	-	80	8	52	16.5	6.7	MDP142275*422817++SN
	3.0	32.0	37.0	22.0	27.5	-	-	120	8	28	7.1	11.2	MDP142305*323722++RN
	4.0	32.0	37.0	22.0	27.5	-	-	120	8	30	5.8	12.3	MDP142405*323722++RN
	5.0	42.0	40.0	20.0	37.5	10.2	-	80	8	55	9.4	10.8	MDP142505*424020++SY
	7.0	42.0	37.0	28.0	37.5	10.2	-	80	8	55	6.7	13.8	MDP142705*423728++SY
	8.0	42.0	43.0	28.0	37.5	10.2	-	80	8	56	6	15.2	MDP142805*424328++SY
	10	42.0	45.0	30.0	37.5	20.3	-	80	8	61	5.2	17.1	MDP142106*424530++SR
	12	42.0	46.0	35.0	37.5	20.3	-	80	8	61	4.3	19.9	MDP142126*424635++SR
15	57.5	45.0	30.0	52.5	20.3	-	60	14	135	8.4	15.1	MDP142156*574530++WR	

Note: "*" indicates the product's capacity deviation, J=±5%, K=±10%, "++" indicates the internal number.



MDP

■ List of Standard Products

Rated voltage	C _N (μF)	W±1 (mm)	H±1 (mm)	T±1 (mm)	P (mm)	P1 (mm)	d±0.05 (mm)	dv/dt (V/μs)	tanδ(×10 ⁻⁴)		ESR@10kHz (mΩ)	I _{max} (A)	Product Code
									1kHz	10kHz			
1400Vdc	20	42.0	62.0	45.0	37.5	20.3	-	80	9	73	3.1	27	MDP142206*426245++SR
	20	57.5	50.0	35.0	52.5	20.3	-	60	14	135	6.3	18.7	MDP142206*575035++WR
	25	57.5	64.5	35.0	52.5	20.3	-	60	14	137	5.1	22.2	MDP142256*576435++WR
	30	57.5	80.0	35.0	52.5	20.3	-	60	15	140	4.4	25.3	MDP142306*578035++WR
	35	57.5	80.0	35.0	52.5	20.3	-	60	15	142	3.8	28.3	MDP142356*578035++WR
	40	57.5	78.0	50.0	52.5	20.3	-	60	15	142	2.8	35	MDP142406*577850++WR
1500Vdc	0.47	32.0	20.0	11.0	27.5	-	0.8	140	8	22	35	3.2	MDP152474*322011++RN
	0.68	32.0	22.0	13.0	27.5	-	-	140	8	22	25	4.3	MDP152684*322213++RN
	1.0	32.0	24.5	15.0	27.5	-	-	140	8	22	17.3	5.6	MDP152105*322415++RN
	1.5	32.0	28.0	18.0	27.5	-	-	140	8	23	11.9	7.5	MDP152155*322818++RN
	1.5	42.0	24.0	15.0	37.5	-	-	100	8	43	24	5.3	MDP152155*422415++SN
	2.0	32.0	31.0	21.0	27.5	-	-	140	8	23	9	9.3	MDP152205*323121++RN
	2.0	42.0	28.0	17.0	37.5	-	-	100	8	43	18.3	6.3	MDP152205*422817++SN
	3.0	32.0	37.0	22.0	27.5	-	-	140	8	25	6.5	11.7	MDP152305*323722++RN
	4.0	42.0	40.0	20.0	37.5	10.2	-	100	8	48	10.3	10.4	MDP152405*424020++SY
	5.0	42.0	37.0	28.0	37.5	10.2	-	100	8	48	8.2	12.4	MDP152505*423728++SY
	6.0	42.0	43.0	28.0	37.5	10.2	-	100	8	48	6.8	14.3	MDP152605*424328++SY
	7.0	42.0	45.0	30.0	37.5	20.3	-	100	8	49	5.9	16.1	MDP152705*424530++SR
	9.0	42.0	46.0	35.0	37.5	20.3	-	100	8	53	5.1	18.2	MDP152905*424635++SR
	10	57.5	45.0	30.0	52.5	20.3	-	65	13	111	10.4	13.6	MDP152106*574530++WR
	15	42.0	62.0	45.0	37.5	20.3	-	100	8	63	3.6	25.3	MDP152156*426245++SR
	15	57.5	50.0	35.0	52.5	20.3	-	65	13	112	7.3	17.4	MDP152156*575035++WR
	18	57.5	64.5	35.0	52.5	20.3	-	65	13	113	5.9	20.7	MDP152186*576435++WR
	20	57.5	64.5	35.0	52.5	20.3	-	65	13	115	5.4	22.9	MDP152206*576435++WR
	25	57.5	80.0	35.0	52.5	20.3	-	65	13	115	4.3	26.7	MDP152256*578035++WR
	35	57.5	78.0	50.0	52.5	20.3	-	65	13	115	2.9	35	MDP152356*577850++WR
1600Vdc	0.47	32.0	22.0	13.0	27.5	-	0.8	150	8	20	30	3.8	MDP162474*322213++RN
	0.56	32.0	22.0	13.0	27.5	-	-	150	8	20	27	4.1	MDP162564*322213++RN
	0.68	32.0	24.5	15.0	27.5	-	-	150	8	21	22.3	4.9	MDP162684*322415++RN
	0.82	32.0	24.5	15.0	27.5	-	-	150	8	21	19	5.4	MDP162824*322415++RN
	1.0	32.0	28.0	18.0	27.5	-	-	150	8	22	15.8	6.6	MDP162105*322818++RN
	1.0	42.0	24.0	15.0	37.5	-	-	110	8	38	31.5	4.6	MDP162105*422415++SN
	1.5	32.0	33.0	18.0	27.5	-	-	150	8	22	11	8.2	MDP162155*323318++RN
	1.5	42.0	28.0	17.0	37.5	-	-	110	8	39	22.1	5.8	MDP162155*422817++SN
	2.0	32.0	37.0	22.0	27.5	-	-	150	8	22	8.5	10.2	MDP162205*323722++RN
	3.3	42.0	40.0	20.0	37.5	-	-	110	8	39	10.1	10.4	MDP162335*424020++SN
	4.0	42.0	37.0	28.0	37.5	-	-	110	8	40	8.5	12.2	MDP162405*423728++SN
	5.0	42.0	45.0	30.0	37.5	20.3	-	110	8	40	6.9	14.1	MDP162505*424530++SR
	6.0	42.0	45.0	30.0	37.5	20.3	-	110	8	44	6.2	15.6	MDP162605*424530++SR
	7.0	42.0	46.0	35.0	37.5	20.3	-	110	8	42	5.1	18.2	MDP162705*424635++SR
8.0	57.5	45.0	30.0	52.5	20.3	-	75	1.2	101	11.6	12.8	MDP162805*574530++WR	

Note: "*" indicates the product's capacity deviation, J=±5%, K=±10%, "++" indicates the internal number.



MDP

■ List of Standard Products

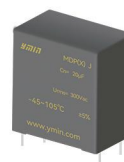
Rated voltage	CN (μF)	W±1 (mm)	H±1 (mm)	T±1 (mm)	P (mm)	P1 (mm)	d±0.05 (mm)	dv/dt (V/μs)	tanδ(×10 ⁻⁴)		ESR@10kHz (mΩ)	I _{max} (A)	Product Code
									1kHz	10kHz			
1600Vdc	12	42.0	62.0	45.0	37.5	20.3	-	110	8	53	3.8	24.5	MDP162126*426245++SR
	12	57.5	50.0	35.0	52.5	20.3	-	75	1.2	104	8.2	16.4	MDP162126*575035++WR
	15	57.5	64.5	35.0	52.5	20.3	-	75	1.2	105	6.5	19.7	MDP162156*576435++WR
	18	57.5	64.5	35.0	52.5	20.3	-	75	1.2	106	5.5	22.7	MDP162186*576435++WR
	20	57.5	80.0	35.0	52.5	20.3	-	75	1.2	108	5	24.7	MDP162206*578035++WR
	25	57.5	80.0	35.0	52.5	20.3	-	75	1.2	108	3.5	35	MDP162256*578035++WR

Note: "*" indicates the product's capacity deviation, J=±5%, K=±10%, "++" indicates the internal number.



MDP(x)

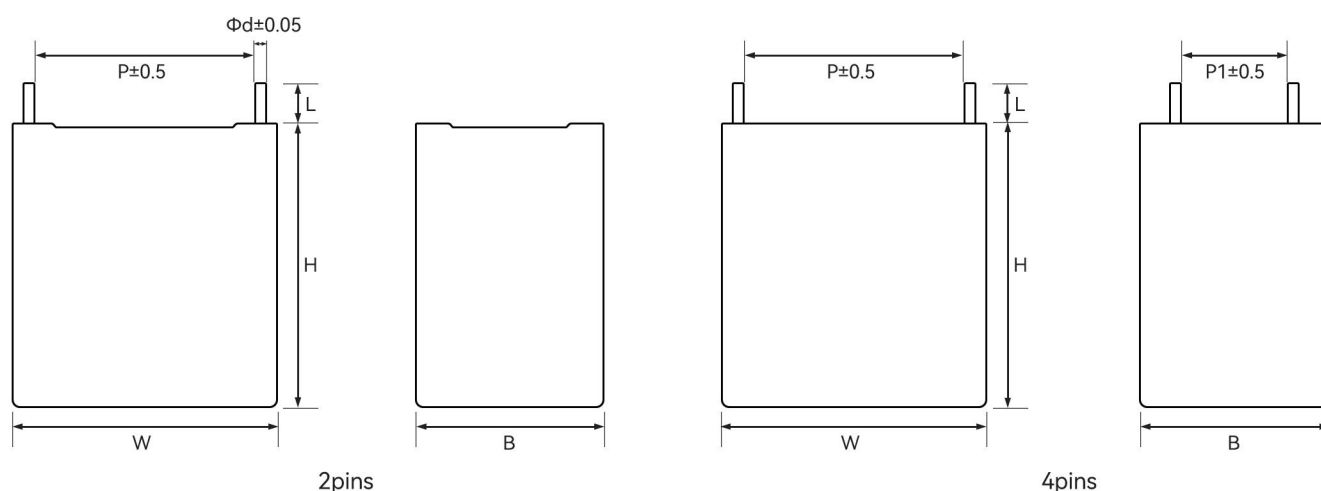
- ◆ DC-LINK capacitors for PCBs
- ◆ Metallized polypropylene film structure
- ◆ Plastic shell encapsulation, epoxy resin filling (UL94 V-0)
- ◆ Excellent electrical performance
- ◆ Application Areas
 - ◇ Solar inverters
 - ◇ Uninterruptible power supplies
 - ◇ Military and high-end power supplies
 - ◇ On-board chargers and charging stations



■ Main technical parameters

project	characteristic
Reference Standards	GB/T 17702 (IEC 61071)
Rated Voltage	500Vd.c.~1500Vd.c.
Capacity Range	5 μ F~240 μ F
Climate Category	40/85/56,40/105/56
Operating Temperature Range	-40°C~105°C(85°C~105°C: Rated voltage decreases by 1.35% for every 1 degree Celsius increase in temperature)
Capacity Tolerance	$\pm 5\%$ (J), $\pm 10\%$ (K)
Withstand Voltage	1.5U _N (10s,20°C $\pm 5^\circ$ C)
Insulation Resistance	$\geq 10000s$ (20°C,100Vd.c.,60s)
Self-Inductance (Ls)	< 1nH/mm Lead spacing
Dielectric Loss Tangent	0.0002
Maximum Peak Current (A)	=C \times dv/dt
Non-Repeatable Peak Current	1.4(1000 times during its lifespan)
Overvoltage	1.1U _N (30% of the load duration/day)
	1.15 U _N (30min/d)
	1.2 U _N (5min/d)
	1.3 U _N (1min/d)
	1.5U _N (During the lifespan of this capacitor, 1000 overvoltage events of 1.5U _N each lasting 30ms are permitted.)
Life expectancy	100000h@U _N ,70°C, $\Theta_{hs}=85^\circ$ C
Failure Rate	$\leq 300FIT@U_N,70^\circ C, \Theta_{hs}=85^\circ C$

■ Product Dimensions



Note: Product dimensions are in mm. Please refer to the "Product Dimension Table" for specific dimensions.



MDP(X)

■ List of Standard Products

Rated voltage	C _N (μF)	W±1 (mm)	H±1 (mm)	T±1 (mm)	P (mm)	P1 (mm)	d±0.05 (mm)	dv/dt (V/μs)	tanδ(×10 ⁻⁴)		ESR@10kHz (mΩ)	I _{max} (A)	Product Code	
									1kHz	10kHz				
500Vdc	30	32.0	37.0	22.0	27.5	10.2	0.8	50	10	100	6.2	14.5	MDP501306*323722++RY	
	40	42.0	40.0	20.0	37.5	10.2	1.0	20	20	190	7.7	13.9	MDP501406*424020++SY	
	50	42.0	37.0	28.0	37.5	10.2	1.0	20	20	190	6.6	17.3	MDP501506*423728++SY	
	55	42.0	44.0	24.0	37.5	10.2	1.0	20	20	190	6.2	19.1	MDP501556*424424++SY	
	70	42.0	45.0	30.0	37.5	20.3	1.2	20	20	190	5.3	21.8	MDP501706*424530++SR	
	80	42.0	46.0	35.0	37.5	20.3	1.2	20	20	190	5	22.2	MDP501806*424635++SR	
	90	42.0	50.0	35.0	37.5	20.3	1.2	20	20	190	4.7	25	MDP501906*425035++SR	
	100	57.5	45.0	30.0	52.5	20.3	1.2	12	12	33	320	5.9	15.5	MDP501107*574530++WR
	120	42.0	55.0	40.0	37.5	20.3	1.2	20	20	190	4	29.1	MDP501127*425540++SR	
	130	57.5	50.0	35.0	52.5	20.3	1.2	12	12	33	320	4.8	20.1	MDP501137*575035++WR
	150	42.0	62.0	45.0	37.5	20.3	1.2	20	20	190	3.6	36.4	MDP501157*426245++SR	
	150	57.5	56.0	35.0	52.5	20.3	1.2	12	12	33	320	3.3	23.2	MDP501157*575635++WR
	180	57.5	64.5	35.0	52.5	20.3	1.2	12	12	33	320	2.7	27.9	MDP501187*576435++WR
	190	57.5	55.0	45.0	52.5	20.3	1.2	12	12	33	320	2.6	29.4	MDP501197*575545++WR
	200	57.5	70.0	35.0	52.5	20.3	1.2	12	12	33	320	2.4	31	MDP501207*577035++WR
	220	57.5	64.5	45.0	52.5	20.3	1.2	12	12	33	320	2.2	34	MDP501227*576445++WR
240	57.5	80.0	35.0	52.5	20.3	1.2	12	12	33	320	2	34.9	MDP501247*578035++WR	
330	57.5	78.0	50.0	52.5	20.3	1.2	12	12	33	320	1.8	35	MDP501337*577850++WR	
600Vdc	25	32.0	37.0	22.0	27.5	10.2	0.8	50	10	100	6.2	12.4	MDP601256*323722++RY	
	35	42.0	40.0	20.0	37.5	10.2	1.0	20	20	190	7.1	13	MDP601356*424020++SY	
	40	42.0	37.0	28.0	37.5	10.2	1.0	20	20	190	6.3	14.2	MDP601406*423728++SY	
	45	42.0	44.0	24.0	37.5	10.2	1.0	20	20	190	5.7	14.7	MDP601456*424424++SY	
	60	42.0	45.0	30.0	37.5	20.3	1.2	20	20	190	4.5	17.1	MDP601606*424530++SR	
	70	42.0	46.0	35.0	37.5	20.3	1.2	20	20	190	4.2	18.4	MDP601706*424635++SR	
	80	42.0	50.0	35.0	37.5	20.3	1.2	20	20	190	3.8	21	MDP601806*425035++SR	
	85	57.5	45.0	30.0	52.5	20.3	1.2	12	12	33	320	5.9	14.7	MDP601856*574530++WR
	100	42.0	55.0	40.0	37.5	20.3	1.2	20	20	190	3.3	23.5	MDP601107*425540++SR	
	110	57.5	50.0	35.0	52.5	20.3	1.2	12	12	33	320	4.8	19	MDP601117*575035++WR
	130	42.0	62.0	45.0	37.5	20.3	1.2	20	20	190	2.7	29.8	MDP601137*426245++SR	
	130	57.5	56.0	35.0	52.5	20.3	1.2	12	12	33	320	3.7	22.4	MDP601137*575635++WR
	160	57.5	64.5	35.0	52.5	20.3	1.2	12	12	33	320	3	27	MDP601167*576435++WR
	160	57.5	55.0	45.0	52.5	20.3	1.2	12	12	33	320	3	27	MDP601167*575545++WR
	170	57.5	70.0	35.0	52.5	20.3	1.2	12	12	33	320	2.7	28.7	MDP601177*577035++WR
	200	57.5	64.5	45.0	52.5	20.3	1.2	12	12	33	320	2.3	33.8	MDP601207*576445++WR
210	57.5	80.0	35.0	52.5	20.3	1.2	12	12	33	320	2.2	35	MDP601217*578035++WR	
290	57.5	78.0	50.0	52.5	20.3	1.2	12	12	33	320	1.9	35	MDP601297*577850++WR	
800Vdc	18	32.0	37.0	22.0	27.5	10.2	0.8	50	10	100	7.2	12.4	MDP801186*323722++RY	
	22	42.0	40.0	20.0	37.5	10.2	1.0	20	20	190	9.4	12.5	MDP801226*424020++SY	
	30	42.0	37.0	28.0	37.5	10.2	1.0	20	20	190	7.3	17.1	MDP801306*423728++SY	
	30	42.0	44.0	24.0	37.5	10.2	1.0	20	20	190	7.3	17.1	MDP801306*424424++SY	
	40	42.0	45.0	30.0	37.5	20.3	1.2	20	20	190	5.8	20	MDP801406*424530++SR	
	45	42.0	46.0	35.0	37.5	20.3	1.2	20	20	190	5.6	22.5	MDP801456*424635++SR	
	55	42.0	50.0	35.0	37.5	20.3	1.2	20	20	190	4.9	27.5	MDP801556*425035++SR	

Note: "*" indicates the product's capacity deviation, J=±5%, K=±10%, "++" indicates the internal number.



MDP(X)

List of Standard Products

Rated voltage	C _N (μF)	W±1 (mm)	H±1 (mm)	T±1 (mm)	P (mm)	P1 (mm)	d±0.05 (mm)	dv/dt (V/μs)	tanδ(×10 ⁻⁴)		ESR@10kHz (mΩ)	I _{max} (A)	Product Code
									1kHz	10kHz			
800Vdc	60	57.5	45.0	30.0	52.5	20.3	1.2	12	33	320	7.3	16.7	MDP801606*574530++WR
	70	42.0	55.0	40.0	37.5	20.3	1.2	20	20	190	4.1	35	MDP801706*425540++SR
	80	57.5	50.0	35.0	52.5	20.3	1.2	12	33	320	5.7	22.2	MDP801806*575035++WR
	90	42.0	62.0	45.0	37.5	20.3	1.2	20	20	190	3.6	45.1	MDP801906*426245++SR
	90	57.5	56.0	35.0	52.5	20.3	1.2	12	33	320	5.2	25	MDP801906*575635++WR
	110	57.5	64.5	35.0	52.5	20.3	1.2	12	33	320	4.4	30.6	MDP801117*576435++WR
	110	57.5	55.0	45.0	52.5	20.3	1.2	12	33	320	4.4	30.6	MDP801117*575545++WR
	120	57.5	70.0	35.0	52.5	20.3	1.2	12	33	320	4.1	33.3	MDP801127*577035++WR
	130	57.5	64.5	45.0	52.5	20.3	1.2	12	33	320	3.9	35	MDP801137*576445++WR
	140	57.5	80.0	35.0	52.5	20.3	1.2	12	33	320	3.7	35	MDP801147*578035++WR
200	57.5	78.0	50.0	52.5	20.3	1.2	12	33	320	2.5	35	MDP801207*577850++WR	
900Vdc	14	32.0	37.0	22.0	27.5	10.2	0.8	50	10	100	7.9	14.9	MDP901146*323722++RY
	20	42.0	40.0	20.0	37.5	10.2	1.0	20	20	190	9.2	12.6	MDP901206*424020++SY
	25	42.0	37.0	28.0	37.5	10.2	1.0	20	20	190	7.7	15.7	MDP901256*423728++SY
	25	42.0	44.0	24.0	37.5	10.2	1.0	20	20	190	7.7	15.7	MDP901256*424424++SY
	35	42.0	45.0	30.0	37.5	20.3	1.2	20	20	190	5.9	22	MDP901356*424530++SR
	40	42.0	46.0	35.0	37.5	20.3	1.2	20	20	190	5.6	25.2	MDP901406*424635++SR
	45	42.0	50.0	35.0	37.5	20.3	1.2	20	20	190	5.2	28.3	MDP901456*425035++SR
	50	57.5	45.0	30.0	52.5	20.3	1.2	12	33	320	7.8	15.3	MDP901506*574530++WR
	60	42.0	55.0	40.0	37.5	20.3	1.2	20	20	190	4.3	37.8	MDP901606*425540++SR
	65	57.5	50.0	35.0	52.5	20.3	1.2	12	33	320	6.2	19.9	MDP901656*575035++WR
	75	42.0	62.0	45.0	37.5	20.3	1.2	20	20	190	3.7	47.2	MDP901756*426245++SR
	75	57.5	56.0	35.0	52.5	20.3	1.2	12	33	320	5.5	22.9	MDP901756*575635++WR
	90	57.5	64.5	35.0	52.5	20.3	1.2	12	33	320	4.8	27.5	MDP901906*576435++WR
	90	57.5	55.0	45.0	52.5	20.3	1.2	12	33	320	4.8	27.5	MDP901906*575545++WR
	100	57.5	70.0	35.0	52.5	20.3	1.2	12	33	320	4.5	28.3	MDP901107*577035++WR
	110	57.5	64.5	45.0	52.5	20.3	1.2	12	33	320	4.1	31.6	MDP901117*576445++WR
120	57.5	80.0	35.0	52.5	20.3	1.2	12	33	320	3.8	33	MDP901127*578035++WR	
160	57.5	78.0	50.0	52.5	20.3	1.2	12	33	320	3.2	35	MDP901167*577850++WR	
1000Vdc	11	32.0	37.0	22.0	27.5	10.2	0.8	50	10	100	9.2	13.3	MDP102116*323722++RY
	15	42.0	40.0	20.0	37.5	10.2	1.0	20	20	190	11.1	10.7	MDP102156*424020++SY
	20	42.0	37.0	28.0	37.5	10.2	1.0	20	20	190	9	14	MDP102206*423728++SY
	20	42.0	44.0	24.0	37.5	10.2	1.0	20	20	190	9	14	MDP102206*424424++SY
	25	42.0	45.0	30.0	37.5	20.3	1.2	20	20	190	7.5	17.8	MDP102256*424530++SR
	30	42.0	46.0	35.0	37.5	20.3	1.2	20	20	190	6.9	21.4	MDP102306*424635++SR
	35	42.0	50.0	35.0	37.5	20.3	1.2	20	20	190	6.2	24.9	MDP102356*425035++SR
	40	57.5	45.0	30.0	52.5	20.3	1.2	12	33	320	9	13.8	MDP102406*574530++WR
	45	42.0	55.0	40.0	37.5	20.3	1.2	20	20	190	5.2	32.1	MDP102456*425540++SR
	50	57.5	50.0	35.0	52.5	20.3	1.2	12	33	320	7.2	17.3	MDP102506*575035++WR
	55	42.0	62.0	45.0	37.5	20.3	1.2	20	20	190	4.7	39.2	MDP102556*426245++SR
	60	57.5	56.0	35.0	52.5	20.3	1.2	12	33	320	6.2	20.7	MDP102606*575635++WR
	70	57.5	64.5	35.0	52.5	20.3	1.2	12	33	320	5.5	24.2	MDP102706*576435++WR
	70	57.5	55.0	45.0	52.5	20.3	1.2	12	33	320	5.5	24.2	MDP102706*575545++WR
80	57.5	70.0	35.0	52.5	20.3	1.2	12	33	320	5	26.3	MDP102806*577035++WR	

Note: "*" indicates the product's capacity deviation, J=±5%, K=±10%, "++" indicates the internal number.



MDP(X)

■ List of Standard Products

Rated voltage	CN (μF)	W±1 (mm)	T±1 (mm)	T±1 (mm)	P (mm)	P1 (mm)	d±0.05 (mm)	dv/dt (V/μs)	tanδ(×10 ⁻⁴)		ESR@10kHz (mΩ)	I _{max} (A)	Product Code
									1kHz	10kHz			
1000Vdc	90	57.5	64.5	45.0	52.5	20.3	1.2	12	33	320	4.5	29.6	MDP102906*576445++WR
	90	57.5	80.0	35.0	52.5	20.3	1.2	12	33	320	4.5	29.6	MDP102906*578035++WR
	130	57.5	78.0	50.0	52.5	20.3	1.2	12	33	320	3.8	35	MDP102137*577850++WR
1100Vdc	8.0	32.0	37.0	22.0	27.5	10.2	0.8	50	10	100	10.7	10.5	MDP112805*323722++RY
	12	42.0	40.0	20.0	37.5	10.2	1.0	20	20	190	12.4	9.7	MDP112126*424020++SY
	15	42.0	37.0	28.0	37.5	10.2	1.0	20	20	190	10.3	12.3	MDP112156*423728++SY
	15	42.0	44.0	24.0	37.5	10.2	1.0	20	20	190	10.7	11.9	MDP112156*424424++SY
	20	42.0	45.0	30.0	37.5	20.3	1.2	20	20	190	8.3	16.4	MDP112206*424530++SR
	25	42.0	46.0	35.0	37.5	20.3	1.2	20	20	190	7	20.5	MDP112256*424635++SR
	28	42.0	50.0	35.0	37.5	20.3	1.2	20	20	190	6.4	23	MDP112286*425035++SR
	30	57.5	45.0	30.0	52.5	20.3	1.2	12	33	320	10.7	11.8	MDP112306*574530++WR
	35	42.0	55.0	40.0	37.5	20.3	1.2	20	20	190	5.6	28.8	MDP112356*425540++SR
	40	57.5	50.0	35.0	52.5	20.3	1.2	12	33	320	8.2	15.4	MDP112406*575035++WR
	45	42.0	62.0	45.0	37.5	20.3	1.2	20	20	190	4.8	37	MDP112456*426245++SR
	45	57.5	56.0	35.0	52.5	20.3	1.2	12	33	320	7.3	17.8	MDP112456*575635++WR
	55	57.5	64.5	35.0	52.5	20.3	1.2	12	33	320	6.2	21.7	MDP112556*576435++WR
	55	57.5	55.0	45.0	52.5	20.3	1.2	12	33	320	6.2	21.7	MDP112556*575545++WR
	60	57.5	70.0	35.0	52.5	20.3	1.2	12	33	320	5.9	23.7	MDP112606*577035++WR
	70	57.5	64.5	45.0	52.5	20.3	1.2	12	33	320	4.9	24.9	MDP112706*576445++WR
	70	57.5	80.0	35.0	52.5	20.3	1.2	12	33	320	4.9	24.9	MDP112706*578035++WR
	100	57.5	78.0	50.0	52.5	20.3	1.2	12	33	320	3.7	35	MDP112107*577850++WR
1200Vdc	7.0	32.0	37.0	22.0	27.5	10.2	0.8	50	10	100	10.7	12.1	MDP122705*323722++RY
	10	42.0	40.0	20.0	37.5	10.2	1.0	20	20	190	14.4	7.9	MDP122106*424020++SY
	12	42.0	37.0	28.0	37.5	10.2	1.0	20	20	190	12.3	9.8	MDP122126*423728++SY
	12	42.0	44.0	24.0	37.5	10.2	1.0	20	20	190	12.3	9.8	MDP122126*424424++SY
	15	42.0	45.0	30.0	37.5	20.3	1.2	20	20	190	10.3	11.3	MDP122156*424530++SR
	20	42.0	46.0	35.0	37.5	20.3	1.2	20	20	190	7.6	14.5	MDP122206*424635++SR
	22	42.0	50.0	35.0	37.5	20.3	1.2	20	20	190	7.1	16	MDP122226*425035++SR
	25	57.5	45.0	30.0	52.5	20.3	1.2	12	33	320	12	9.8	MDP122256*574530++WR
	28	42.0	55.0	40.0	37.5	20.3	1.2	20	20	190	6.1	19.9	MDP122286*425540++SR
	35	42.0	62.0	45.0	37.5	20.3	1.2	20	20	190	5.1	21.4	MDP122356*426245++SR
	35	57.5	50.0	35.0	52.5	20.3	1.2	12	33	320	9	13.4	MDP122356*575035++WR
	40	57.5	56.0	35.0	52.5	20.3	1.2	12	33	320	7.9	13.9	MDP122406*575635++WR
	45	57.5	64.5	35.0	52.5	20.3	1.2	12	33	320	7.3	16.7	MDP122456*576435++WR
	50	57.5	55.0	45.0	52.5	20.3	1.2	12	33	320	6.9	16.9	MDP122506*575545++WR
	55	57.5	70.0	35.0	52.5	20.3	1.2	12	33	320	6.5	18.2	MDP122556*577035++WR
	60	57.5	64.5	45.0	52.5	20.3	1.2	12	33	320	5.9	19.6	MDP122606*576445++WR
	60	57.5	80.0	35.0	52.5	20.3	1.2	12	33	320	5.9	19.6	MDP122606*578035++WR
	80	57.5	78.0	50.0	52.5	20.3	1.2	12	33	320	4.2	34	MDP122806*577850++WR

Note: "*" indicates the product's capacity deviation, J=±5%, K=±10%, "++" indicates the internal number.



MAP

- ◆ AC filter capacitor
- ◆ Metallized polypropylene film structure
- ◆ Plastic shell encapsulation, epoxy resin filling (UL94 V-0)
- ◆ Excellent electrical performance
- ◆ Application Areas
 - ◇ Solar photovoltaic DC/AC inverters, LCL filters
 - ◇ Uninterruptible power supplies (UPS)
 - ◇ Military and high-end power supplies
 - ◇ Automotive OBCs



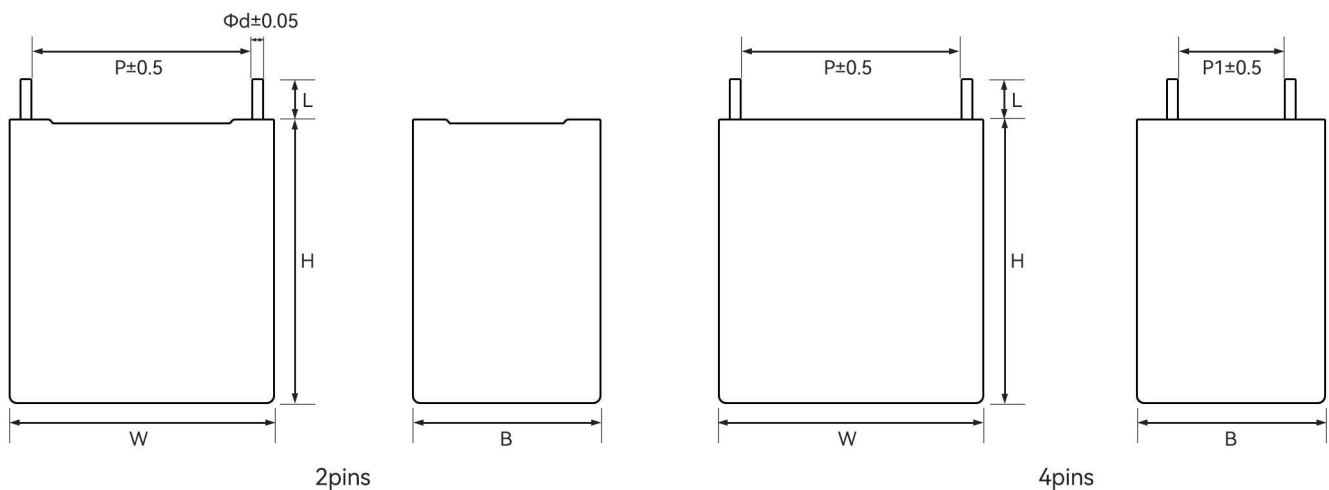
■ Main technical parameters

project	characteristic	
Referenced Standards	GB/T 17702 (IEC 61071)	
Climate Category	40/85/56	
Operating Temperature Range	-40°C~105°C(85°C~105°C: Rated voltage decreases by 1.35% for every 1 degree Celsius increase in temperature)	
Rated RMS Voltage	300Vac	350Vac
Maximum Continuous DC Voltage	560Vdc	600Vdc
Capacity Range	4.7 μF~28 μF	3μF~20μF
Capacity Tolerance	±5%(J), ±10%(K)	
Withstand voltage	Between poles	1.5U _N (Vac) (10s)
	Between the poles and shells	3000Vac(10s)
Insulation Resistance	≥3000s (20°C, 100Vd.c., 60s)	
Loss Tangent	≤20x10 ⁻⁴ (1kHz, 20°C)	

Notes:

1. Capacitor size, voltage, and capacity can be customized according to customer requirements;
2. For outdoor use or in environments with high humidity, a moisture-proof design is recommended.

■ Product Dimensions



Note: Product dimensions are in mm. Please refer to the "Product Dimension Table" for specific dimensions.



MAP

■ List of Standard Products

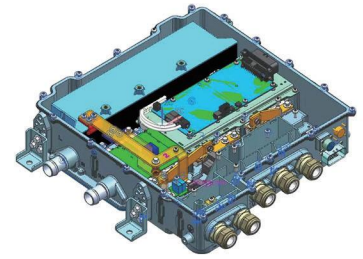
Rated voltage	CN (μF)	W±1 (mm)	H±1 (mm)	T±1 (mm)	P (mm)	P1 (mm)	d±0.05 (mm)	Ls (nH)	I _s (A)	ESR@10kHz (mΩ)	I _{max} 70°C/10kHz (A)	Product Code
Urms 300Vac & UNDC 560Vdc	1.0	32.0	20.0	11.0	27.5	-	1.0	16	300	15.9	4	MAP301105*322011++RN
	1.5	32.0	22.0	13.0	27.5	-	1.0	17	450	10.6	5	MAP301155*322213++RN
	2.0	32.0	24.5	15.0	27.5	-	1.0	18	600	8.9	6	MAP301205*322415++RN
	2.2	32.0	24.5	15.0	27.5	-	1.0	18	660	8	7	MAP301225*322415++RN
	2.5	32.0	28.0	14.0	27.5	-	1.0	19	750	7.2	8	MAP301255*322814++RN
	3.0	32.0	33.0	18.0	27.5	-	1.2	21	900	6.4	9	MAP301305*323318++RN
	3.0	41.0	26.0	15.0	37.5	-	1.2	22	630	10.1	6	MAP301305*412615++SN
	3.3	32.0	33.0	18.0	27.5	-	1.2	20	990	5.3	10	MAP301335*323318++RN
	3.5	32.0	33.0	18.0	27.5	-	1.2	21	1050	4.8	10	MAP301355*323318++RN
	4.0	32.0	33.0	18.0	27.5	-	1.2	21	1200	4.6	11	MAP301405*323318++RN
	4.7	32.0	37.0	22.0	27.5	-	1.2	23	1438	3.9	13.1	MAP301475*323722++RN
	5.0	32.0	37.0	22.0	27.5	-	1.2	23	1530	3.3	13.1	MAP301505*323722++RN
	5.0	42.0	32.0	19.0	37.5	-	1.2	26	1080	5.9	10	MAP301505*423219++SN
	6.0	42.0	32.0	19.0	37.5	-	1.2	26	1296	4.9	11.1	MAP301605*423219++SN
	6.8	32.0	37.0	22.0	27.5	-	1.2	23	2080	3.2	14.1	MAP301685*323722++RN
	6.8	42.0	37.0	22.0	37.5	-	1.2	26	1468	4.3	12.1	MAP301685*423722++SN
	8.0	42.0	37.0	22.0	37.5	-	1.2	26	1728	3.8	13.2	MAP301805*423722++SN
	10	42.0	41.0	26.0	37.5	-	1.2	30	2160	2.9	14.1	MAP301106*424126++SN
	12	42.0	43.0	28.0	37.5	-	1.2	30	2592	2.4	14.1	MAP301126*424328++SN
	15	42.0	45.0	30.0	37.5	-	1.2	30	3240	2.1	14.1	MAP301156*424530++SN
18	57.5	45.0	30.0	52.5	20.3	1.2	32	2268	3.7	17.2	MAP301186*574530++WR	
20	57.5	45.0	30.0	52.5	20.3	1.2	32	2520	3.3	18.2	MAP301206*574530++WR	
22	57.5	45.0	30.0	52.5	20.3	1.2	32	2772	3	20.1	MAP301226*574530++WR	
25	57.5	50.0	35.0	52.5	20.3	1.2	32	3150	2.7	21	MAP301256*575035++WR	
28	57.5	50.0	35.0	52.5	20.3	1.2	32	3528	2.5	22	MAP301286*575035++WR	
Urms 350Vac & UNDC 600Vdc	3.0	32.0	37.0	22.0	27.5	-	1.2	24	468	5.7	7.5	MAP351305*323722++RN
	3.3	32.0	37.0	22.0	27.5	-	1.2	24	514	5.2	7.8	MAP351335*323722++RN
	3.5	32.0	37.0	22.0	27.5	-	1.2	24	546	4.9	8	MAP351355*323722++RN
	4.0	32.0	37.0	22.0	27.5	-	1.2	24	624	4.3	8.4	MAP351405*323722++RN
	4.0	42.0	32.0	19.0	37.5	-	1.2	32	624	8.2	7.1	MAP351405*423219++SN
	4.5	42.0	37.0	22.0	37.5	-	1.2	32	513	7.5	8.2	MAP351455*423722++SN
	5.0	42.0	37.0	22.0	37.5	-	1.2	32	570	6.9	8.5	MAP351505*423722++SN
	5.5	42.0	37.0	22.0	37.5	-	1.2	32	627	6.5	8.8	MAP351555*423722++SN
	6.0	41.0	41.0	26.0	37.5	-	1.2	32	684	6.1	9.8	MAP351605*414126++SN
	6.5	41.0	41.0	26.0	37.5	-	1.2	32	741	5.7	10.2	MAP351655*414126++SN
	7.0	41.0	41.0	26.0	37.5	-	1.2	32	798	5.4	10.5	MAP351705*414126++SN
	7.5	41.0	41.0	26.0	37.5	-	1.2	32	855	5.2	10.7	MAP351755*414126++SN
	8.0	41.0	41.0	26.0	37.5	-	1.2	32	912	5	10.7	MAP351805*414126++SN
	8.5	42.0	43.0	28.0	37.5	-	1.2	32	969	4.8	10.7	MAP351855*424328++SN
	9.0	42.0	43.0	28.0	37.5	-	1.2	32	1026	4.6	10.7	MAP351905*424328++SN
	9.5	42.0	45.0	30.0	37.5	-	1.2	32	1083	4.4	10.7	MAP351955*424530++SN
	10	42.0	45.0	30.0	37.5	-	1.2	32	1140	4.3	10.7	MAP351106*424530++SN
	11	57.5	45.0	30.0	52.5	20.3	1.2	32	924	5.2	12	MAP351116*574530++WR
	12	57.5	45.0	30.0	52.5	20.3	1.2	32	1008	4.3	14.2	MAP351126*574530++WR
	15	57.5	50.0	35.0	52.5	20.3	1.2	32	1260	3.6	16.5	MAP351156*575035++WR
18	57.5	50.0	35.0	52.5	20.3	1.2	32	1512	3.1	18.2	MAP351186*575035++WR	
20	57.5	64.5	35.0	52.5	20.3	1.2	32	1680	2.9	20	MAP351206*576435++WR	

Note: "*" indicates the product's capacity deviation, J=±5%, K=±10%, "++" indicates the internal number.



MDR

- ◆ Bus capacitors for new energy vehicles
- ◆ Epoxy resin encapsulation
- ◆ Dry-type design
- ◆ Self-healing properties
- ◆ Low ESL, low ESR
- ◆ Strong ripple current withstand capability
- ◆ Isolated metallized film design
- ◆ Highly customized/integrated



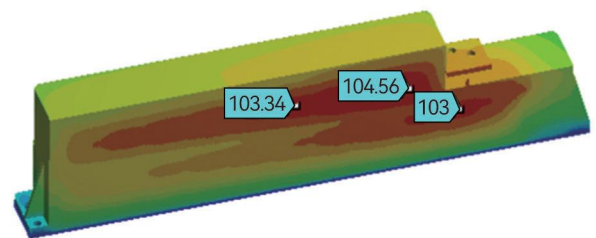
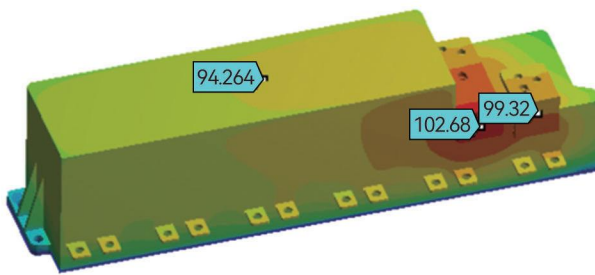
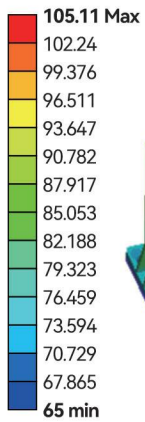
◆ Application Areas

- ◇ DC-Link DC filter circuit
- ◇ Hybrid electric vehicles and pure electric vehicles

■ Design of thermal management (thermal simulation)

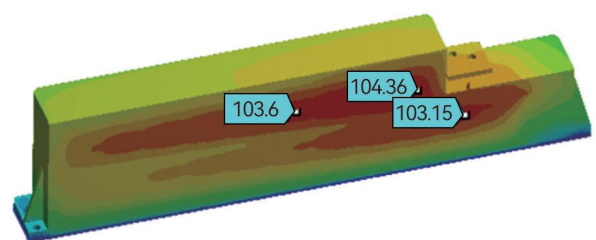
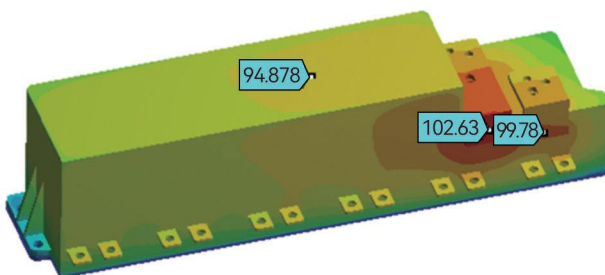
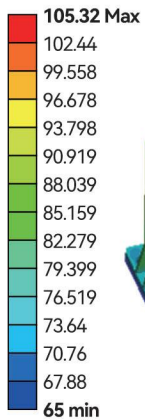
Normal operating procedure for capacitors at ambient temperatures of 85°C or 105°C

Type: Temperature
Unit: °C
Time: 60

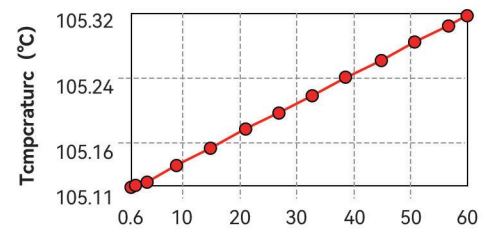


Continuous operation

Type: Temperature
Unit: °C
Time: 60



Peak operation for 60 seconds



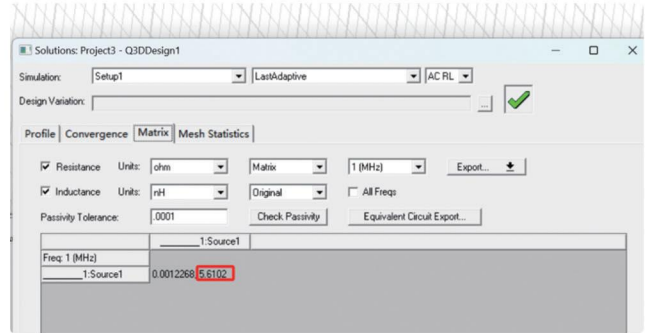
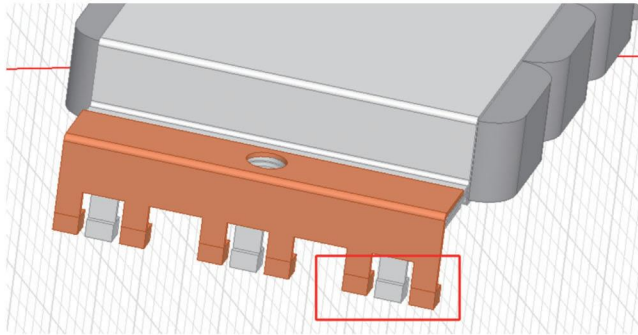
Core maximum temperature variation curve over time

Capacitor temperature distribution



Low-stray-inductance R&D capabilities (electromagnetic simulation)

Low-influence schemes: 20nH, 15nH, 10nH, 5nH.



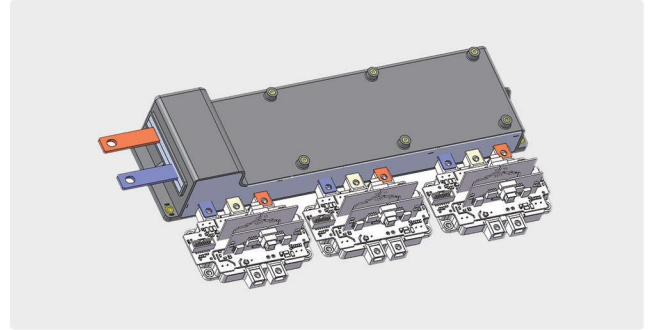
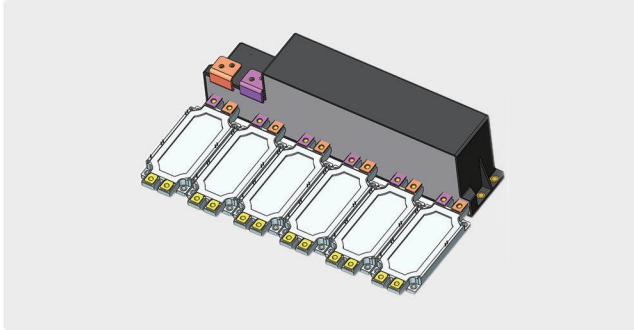
Customized modular capacitor R&D capabilities

R&D capabilities			
New energy vehicles			
	Passenger cars	Passenger vehicle - chassis integration	Commercial vehicles & special vehicles
Industrial control industry			
	Two-level	Three-level	

Module model	Power Module	Bus capacitor design case	Application areas
HPD			New energy electric passenger vehicles; low-power electric commercial vehicles
Econodual			High-power new energy electric commercial vehicles Inverter Energy storage PCS
FS400R07			Low-power new energy electric commercial vehicles Aircraft
TPAK			New energy electric passenger vehicles (laser welding)
F3L400R1			Frequency converter (three-level) Energy storage PCS (three-level) Inverter (three-level)
XM3			Frequency converter Inverter Converter
DCM			Frequency converter Inverter Converter



■ Application areas of modular capacitors



Capacity: 0.1 μ F~10000 μ F	Voltage: 400~3000VDC	Operating temperature: -40~105°C
-------------------------------------	----------------------	----------------------------------



High power frequency converter



High power converter



Electric vehicle fast charging station

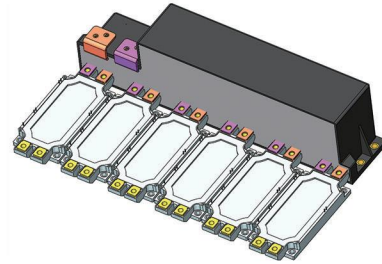
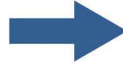


Electric vehicle motor controller

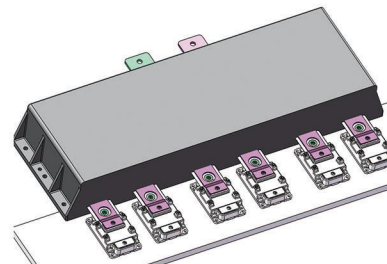
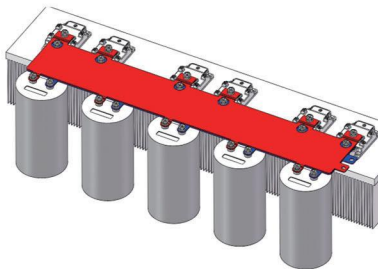


■ Example of modular capacitors replacing cylindrical capacitors (two-level)

Case Study 1:



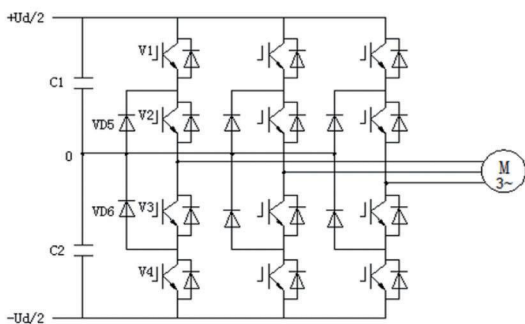
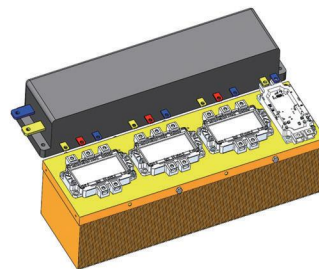
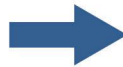
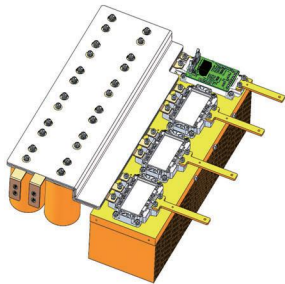
Case Study 2:



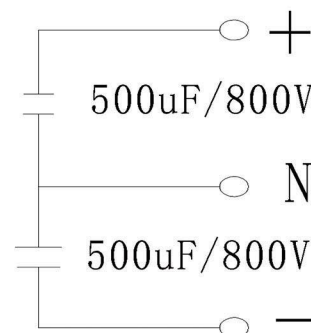
■ Case study of modular capacitors replacing cylindrical capacitors (three-level)

Replacing the traditional cylindrical capacitor solution, the modular capacitor adopts an integrated packaging process of welding the cell and stacked busbar, which has advantages such as low cost, small size, large current handling for small capacitance values, low ESR, low impurity inductance, high integration, and high customization.

Case Study 3:



Three-level circuit topology diagram



Internal electrical diagram of a capacitor

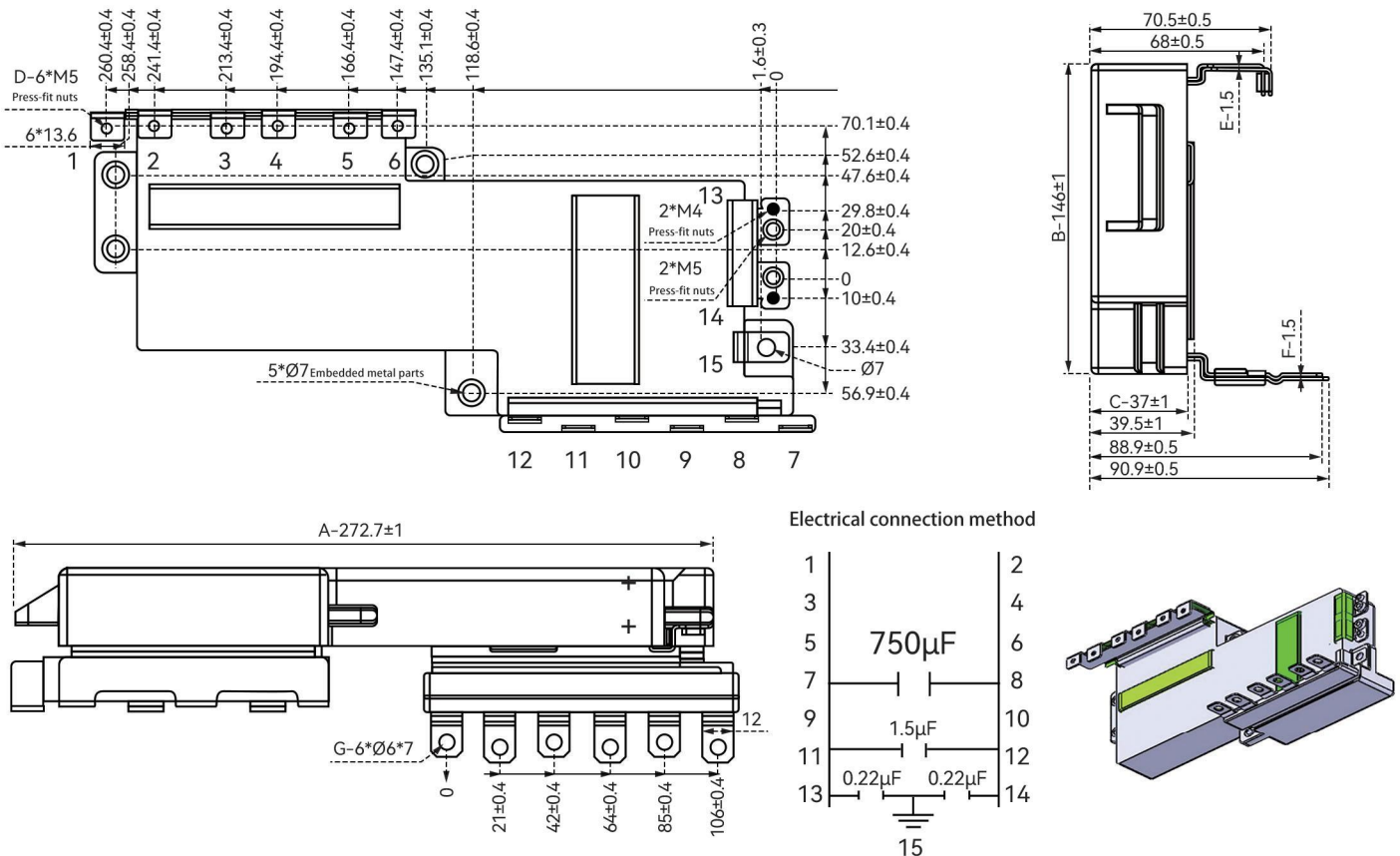


MDR (Dual-motor hybrid vehicle bus capacitor)

■ Main technical parameters

project	characteristic		
Reference Standards	GB/T 17702(IEC 61071), AEC-Q200D		
Rated Capacity	CN	750 μ F \pm 10%	100Hz 20 \pm 5 $^{\circ}$ C
Rated Voltage	UNDC	500VDC	
Inter-electrode Voltage		750VDC	1.5UN, 10s
Case Voltage		3000VAC	10s 20 \pm 5 $^{\circ}$ C
Insulation Resistance (IR)	C x Ris	\geq 10000s	500VDC, 60s
Loss Tangent	tan δ	$<$ 10 \times 10 $^{-4}$	100Hz
Equivalent Series Resistance (ESR)	Rs	\leq 0.4m Ω	10kHz
Maximum Repeatable Inrush Current	\hat{i}	3750A	(t \leq 10 μ S, interval \geq 0.6s)
Maximum Pulse Current	\hat{i}_s	11250A	(30ms each time, no more than 1000 times)
允许最大纹波电流有效值 (交流端子)	I rms	TM:150A, GM:90A 270A	(Continuous current @ 10kHz, ambient temperature 85 $^{\circ}$ C) (\leq 60s@10kHz, ambient temperature 85 $^{\circ}$ C)
Self-Inductance	Le	$<$ 20nH	1MHz
Clearance (between terminals)		\geq 5.0mm	
Creep Distance (between terminals)		\geq 5.0mm	
Expected Life		\geq 100000h	UN θ HS \leq 70 $^{\circ}$ C
Failure Rate		\leq 100FIT	
Flame Retardancy		UL94-V0	Meets RoHS requirements
Dimensions	L*W*H	272.7*146*37	
Operating Temperature Range	Θ case	-40 $^{\circ}$ C~+105 $^{\circ}$ C	
Storage Temperature Range	Θ storage	-40 $^{\circ}$ C~+105 $^{\circ}$ C	

■ Product Dimensions



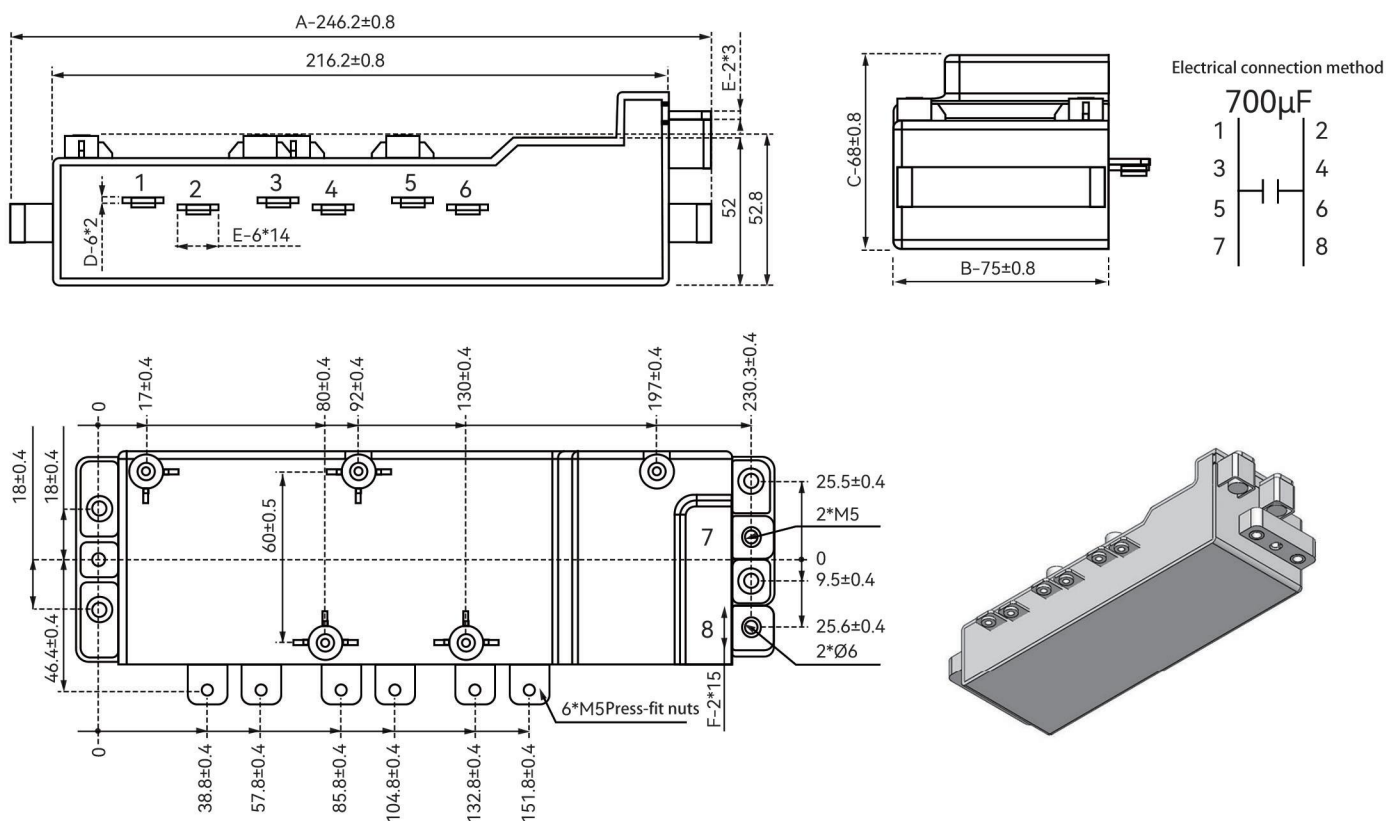


MDR(Passenger vehicle bus capacitor)

■ Main technical parameters

project	characteristic		
Reference Standards	GB/T 17702(IEC 61071), AEC-Q200D		
Rated Capacity	CN	700 μ F \pm 10%	100Hz 20 \pm 5 $^{\circ}$ C
Rated Voltage	UNDC	500VDC	
Inter-electrode Voltage		750VDC	1.5UN, 10s
Case Voltage		3000VAC	10s 20 \pm 5 $^{\circ}$ C
Insulation Resistance (IR)	C x Ris	\geq 10000s	500VDC, 60s
Loss Tangent	tan δ	$<$ 10 \times 10 $^{-4}$	100Hz
Equivalent Series Resistance (ESR)	Rs	\leq 0.35m Ω	10kHz
Maximum Repeatable Inrush Current	\hat{I}	3500A	(t \leq 10 μ S, interval \geq 0.6s)
Maximum Pulse Current	\hat{I}_s	10500A	(30ms each time, no more than 1000 times)
Maximum permissible RMS ripple current (AC terminals)	I rms	150A	(Continuous current @ 10kHz, ambient temperature 85 $^{\circ}$ C)
		250A	(\leq 60s@10kHz, ambient temperature 85 $^{\circ}$ C)
Self-Inductance	Le	$<$ 15nH	1MHz
Clearance (between terminals)		\geq 5.0mm	
Creep Distance (between terminals)		\geq 5.0mm	
Expected Life		\geq 100000h	UN θ HS \leq 70 $^{\circ}$ C
Failure Rate		\leq 100FIT	
Flame Retardancy		UL94-V0	Meets RoHS requirements
Dimensions	L*W*H	246.2*75*68	
Operating Temperature Range	Θ case	-40 $^{\circ}$ C~+105 $^{\circ}$ C	
Storage Temperature Range	Θ storage	-40 $^{\circ}$ C~+105 $^{\circ}$ C	

■ Product Dimensions



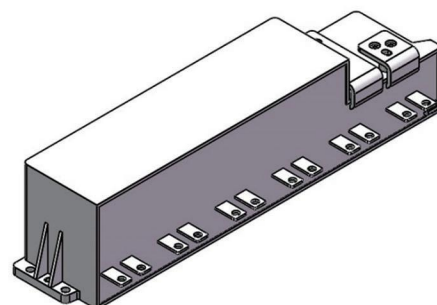
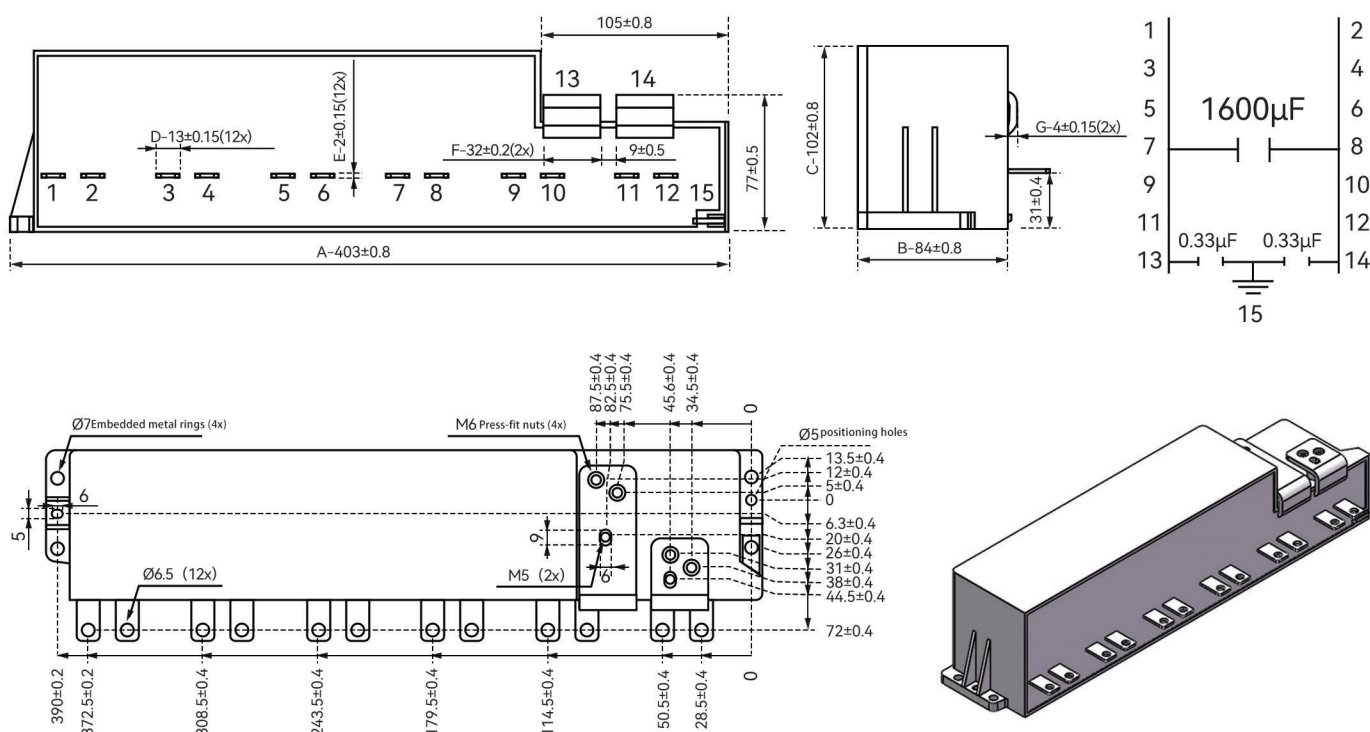


MDR(Commercial vehicle bus capacitor)

■ Main technical parameters

project	characteristic		
Reference Standards	GB/T 17702(IEC 61071), AEC-Q200D		
Rated Capacity	CN	1500uF±10%	100Hz 20±5°C
Rated Voltage	UNDC	800VDC	
Inter-electrode Voltage		1200VDC	1.5UN, 10s
Case Voltage		3000VAC	10s 20±5°C
Insulation Resistance (IR)	C x Ris	≥10000s	500VDC, 60s
Loss Tangent	tanδ	<10 x 10 ⁻⁴	100Hz
Equivalent Series Resistance (ESR)	Rs	≤0.3mΩ	10kHz
Maximum Repeatable Inrush Current	\hat{i}	7500A	(t ≤ 10 μs, interval ≥ 0.6s)
Maximum Pulse Current	\hat{i}_s	15000A	(30ms each time, no more than 1000 times)
Maximum permissible RMS ripple current (AC terminals)	I rms	350A	(Continuous current @ 10kHz, ambient temperature 85°C)
		450A	(≤ 60s@10kHz, ambient temperature 85°C)
Self-Inductance	Le	< 15nH	1MHz
Clearance (between terminals)		≥8.0mm	
Creep Distance (between terminals)		≥8.0mm	
Expected Life		≥100000h	UN θHS ≤ 70°C
Failure Rate		≤100FIT	
Flame Retardancy		UL94-V0	Meets RoHS requirements
Dimensions	L*W*H	403*84*102	
Operating Temperature Range	Θcase	-40°C~+105°C	
Storage Temperature Range	Θstorage	-40°C~+105°C	

■ Product Dimensions





Precautions:

1. Product Suitability Statement

- The product information and technical parameters in this selection manual are based on data obtained under specific test conditions. Actual performance may vary depending on the application environment. This data is obtained based on YMin's standard testing methods and does not constitute a performance guarantee for the product in all application scenarios. Customers must conduct thorough verification based on their own application conditions to ensure that the selected product meets their actual needs.

2. Usage Risk Warning

- Electronic components may still experience occasional failures or performance degradation under normal use conditions. For high-risk applications involving personal safety or critical system operation (such as medical equipment, industrial control, automotive electronics, aerospace, etc.), customers must take necessary protective measures (such as redundant design, safety protection circuits, etc.) to ensure system safety.

3. Product Updates and Changes

- Ymin continuously optimizes product performance and technical specifications; the content of this selection manual may be updated at any time. Before making final selections and placing orders, customers should confirm the latest product parameters and availability with our sales or technical support department.

4. Transaction Terms

- Unless otherwise agreed in writing, all orders are subject to YMIN's standard sales terms. Any verbal or informal communication shall not constitute contractual content; the final agreement shall be the formally signed purchase agreement between both parties.

5. Intellectual Property Protection

- All technical information, product images, and specifications in this selection manual are the property of Yongming Company. Without written authorization, customers may not reproduce, modify, or use them for commercial purposes.

6. Final Interpretation and Revision

- Yongming Company reserves the right to the final interpretation of this statement and the contents of this selection manual, and has the right to revise them according to technological developments or regulatory requirements. Revised terms will be published on the official website or in the new version of the manual without further notice.

7. Customer Confirmation Terms

- By using this selection manual or purchasing Yongming Company products, customers are deemed to have read, understood, and agreed to all the contents of this statement.